

Revisión / Review

## Broad-spectrum survey of medicinal plants as a potential source of anticancer agents

[Estudio de amplio espectro de plantas medicinales como fuente potencial de agentes contra el cáncer]

K. Saranya<sup>1</sup>, V. Manivasagan<sup>1</sup>, K. Gopi<sup>1</sup> & K. Karthik<sup>2</sup><sup>1</sup>Department of Biotechnology, Adhiyamaan College of Engineering (Autonomous), Hosur 635109, Tamil Nadu, India<sup>2</sup>Departments of Biotechnology, Nadar Mahajana Sangam S. Vellaichamy Nadar College (Autonomous), Madurai 625019, Tamil Nadu, India**Reviewed by:**Adriana de Oliveira  
Universidade Estadual de Campinas  
BrazilOnder Yumrutas  
University of Adiyaman  
Turkey**Correspondence:**K. Gopi  
[gopikarruppaya17@gmail.com](mailto:gopikarruppaya17@gmail.com)**Section Review**Received: 16 August 2020  
Accepted: 3 Abril de 2021  
Accepted corrected: 25 April 2021  
Published: 30 January 2022**Citation:**Saranya K, Manivasagan V, Gopi K, Karthik K.  
Broad-spectrum survey of medicinal plants  
as a potential source of anticancer agents  
**Bol Latinoam Caribe Plant Med Aromat**  
21 (1): 1 - 40 (2022).  
<https://doi.org/10.37360/blacpma.22.21.1.01>

**Abstract:** Cancer is an abnormal and uncontrolled growth of cells that spreads through cell division. There are different types of medicines available to treat cancers, but no drug is found to be fully effective and safe for humans. The major problem involved in the cancer treatments is the toxicity of the established drug and their side effects. Medicinal plants are used as folk medicines in Asian and African populations for thousands of years. 60% of the drugs for treating cancer are derived from plants. More than 3000 plants have anticancer activity. The present review aims at the study of a broad spectrum survey of plants having anticancer components for different type of cancers. This article consists of 364 medicinal plants and their different parts as potential Source of Anticancer Agents.

**Keywords:** Cancer; Medicinal plants; Anticancer activity; Phytochemicals; Cell lines.

**Resumen:** El cáncer es un crecimiento anormal y descontrolado de células que se disemina a través de la división celular. Hay diferentes tipos de medicamentos disponibles para tratar el cáncer, pero no se ha encontrado ningún medicamento que sea completamente efectivo y seguro para los seres humanos. El principal problema involucrado en los tratamientos del cáncer es la toxicidad del fármaco establecido y sus efectos secundarios. Las plantas medicinales se utilizan como medicinas populares en poblaciones asiáticas y africanas durante miles de años. El 60% de los medicamentos para el tratamiento del cáncer se derivan de plantas. Más de 3000 plantas tienen actividad anticancerígena. La presente revisión tiene como objetivo el estudio de un estudio de amplio espectro de plantas que tienen componentes anticancerígenos para diferentes tipos de cánceres. Este artículo consta de 364 plantas medicinales y sus diferentes partes como fuente potencial de agentes anticancerígenos.

**Palabras clave:** Cáncer; Plantas medicinales; Actividad anticancerígena; Fitoquímicos; Líneas celulares.

## INTRODUCTION

Cancer is the abnormal and uncontrolled growth of cells that spreads through cell division. Cancer cells spread to other tissues through body fluids and destroy normal cells present in the other parts of the body. These cells are generated due to the imbalance of the body and by correcting this imbalance; the cancer can be treated (Prakash *et al.*, 2013). Cancer begins with mutations in DNA, which instructs the cells how to grow and divide. Normal cells in the human body have the ability to repair the mutations in their DNA, but the mutation which is not repaired and causing the cells to grow becomes cancerous (Krishnamurthi, 2000). Every year, millions of people are diagnosed with cancer. Cancer is the second most cause of death in the world, and 9.6 million deaths in 2018. About 1 in 6 deaths in the world occur due to cancer. According to the American Cancer Society, deaths arising from cancer constitute 2 - 3% of the annual deaths recorded worldwide. Thus, cancer kills about 3500 million people annually all over the world (WHO, 2018).

Lung cancer is the most common cause of cancer in the world with 2,093,876 new cases and 1,761,007 deaths. Breast cancer is the most common type of cancer in women with 2,088,849 new cases and 626,679 deaths. Prostate cancer is the second most common cause of cancer in the world with 1,276,106 new cases and 358,989 deaths (Siegel *et al.*, 2018). The different type of cancer that affecting the humans and most common effects of all the type of cancers affect the digestive tract. It is very difficult to find the specific cause of cancer. However, tobacco use, alcohol consumption, environmental pollutants, infectious agents, high body mass index (BMI), low fruit and vegetable intake, lack of physical activity, and lifestyles are some commonly known reasons responsible for this disease. Environmental factor that contributes to the cancer deaths includes radiation, infection, heredity, stress and environmental pollutants; Tobacco use is the most important risk factor for cancer and is responsible for approximately 22% of cancer deaths and smoking causes 90% of lung cancer (GBD, 2016). It also causes kidney, stomach, pancreas, larynx, and bladder cancer. Physical inactivity, obesity and diet relate to 30-35% of cancer deaths (Kuper *et al.*, 2002). This article provides a comprehensive analysis of plant derived anticancer compounds and their anticancer therapeutic properties of various types of *in vitro* and *in vivo* models.

## Anticancer medicinal plants

Medicinal plants place an important role in basis and traditional medicine systems, and it provided an effective and curable remedy for mankind. Medicinal plants have been used as folk medicines in Asian, Chinese and African populations for thousands of years. Herbal medicines have been used and are still used in developing countries as the primary source of medical treatment. Plants have been used in the medicine for their natural antiseptic properties and important drug sources (Garg *et al.*, 2007). Phytochemicals and their derived medicinal components are present in different parts of the plant like flower, flower stigmas, pericarp, sprouts, fruits, seeds, roots, rhizomes, stem, leaf, embryo, bark and it contains phytochemical components like Terpenoids, Flavonoids, Phenols, Saponins, Tannins, Alkaloids, Proteins, and Amino acids, Resins, Oils, Carbohydrates, Steroids and Glycosides, biomolecules and other primary and secondary metabolites. They play significant roles in either inhibiting cancer cell or activating proteins to suppress the growth (Tariq *et al.*, 2017). According to the WHO, more than 80% of the population in the developing countries is depending on traditional medicine for the treatment of cancer (Merina *et al.*, 2012). According to statistics, 60% of the drugs used in cancer treatments are derived from plants. The effort of researchers to find anticancer components from plants was launched by the US National Cancer Institute (NCI) in 1957. Today, many of the most useful and curative anticancer drugs are derived from the natural plant products. Since the initiation of NCI program, more than 35,000 plant species had investigated and resulted in the discovery of anticancer drugs. Anticancer compounds have been identified and extracted from medicinal plants for their anticancer properties include Allicin, Apigenin, Berberine, Catechin gallate, Celastrol, Curcumin, Epigallocatechin gallate, Fisetin, Flavopiridol, Gambogicacid, Genistein, Plumbagin, Quercetin, Resveratrol, Silibinin, Taxol, Vinblastine, Vincristine, Combretastatins, Paclitaxel, Camptothecin, Homoharringtonine. Plant derived anticancer agents are highly effective in the treatment of cancer cells. Due to this, there is a high demand of these plants for the production of therapeutically important compounds. There are different types of medicinal plants all over the world, which are being used traditionally for cancer prevention and treatment. Some phytochemicals that are important active constituents of plants have shown in future

cancer management. The medicinal plants and their anticancer activities are mentioned in Table No. 1.

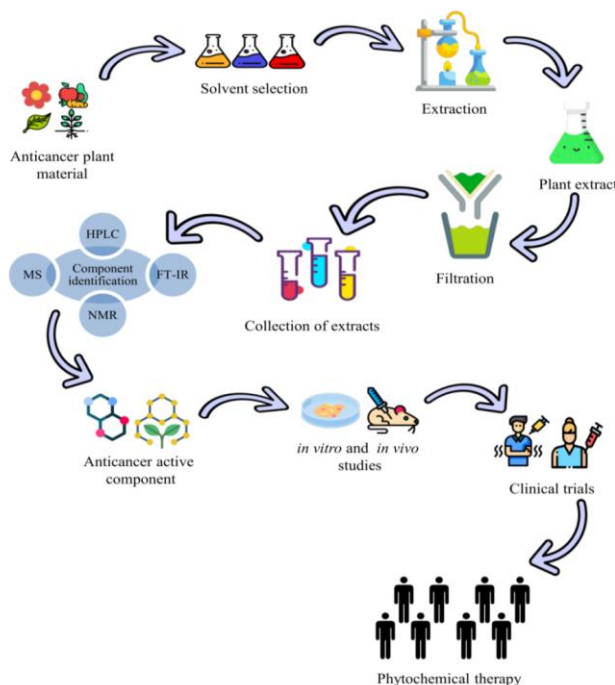
### **Development of anticancer agents, from plants**

Medicinal plants are the important source of anticancer agents based upon the active phytochemical components present in the plants. Several medicinal plants used as a folk medicine in many countries (Jamshidi-Kia *et al.*, 2018). The main reason for the medicinal plants having the many pharmacological activities, it has a specific active component against the disease. Based on the pharmacological activities the active components are purged from the medicinal plants.

The purification of active phytochemical components forms medicinal plants having the many step chemical and biological process. Flower, flower stigmas, pericarp, sprouts, fruits, seeds, roots, rhizomes, stem, leaf, embryo and bark are the important part of the medicinal plants having anticancer properties. Extraction process was collecting the plant components in the different fractions using solvents. Most of the plant extraction

process was using the Soxhlet extraction. Phytochemical analysis was process was identifying the phytochemical components present in the crude plant extract. The structural identification of active phytochemical components and bioactivity of the plant extract fractions using various analytical techniques such as TLC, HPLC, FTIR, Mass spectroscopy and NMR. These analytical techniques were analyzing the quantity and quality of components. Chromatography techniques used for purification of active components based upon the polarity of solvent and active component. Superdex, Sephadex, Silica and many other suitable matrixes can be used for fractionation of active components. Purified phytochemical components examined for preclinical study under in-vitro cancer cell lines and in-vivo animal models for pharmacokinetics, pharmacodynamics, metabolism, Biosafety and side effects. Detailed scheme of selection of medicinal plant, extractions, phytochemical analysis, compound identification, synthesis, preclinical studies and clinical trials of anticancer agent is shown in Figure No. 1.

**Figure No. 1**  
Detailed scheme of selection of medicinal plant, extractions, phytochemical analysis, compound identification, synthesis, preclinical studies and clinical trials of anticancer agent



Icons made by Freepik from [www.flaticon.com](http://www.flaticon.com)

**Table No. 1**  
**The medicinal plants and their anticancer activities**

S.No.	Plant name	Plant part used	Anti cancer agents	Specific cancer suppressed	Reference s
1.	<i>Acacia Cyclops</i>	Pods	Monoterpenoid	breast cancer	Jelassi <i>et al.</i> , 2014
2.	<i>Acacia salicina</i>	Leaves	Flavonoids	leukemia	Chatti <i>et al.</i> , 2009
3.	<i>Achillea cretica</i>	Shoot	Lactone	breast, ovarian, colon cancer	Hichri <i>et al.</i> , 2018
4.	<i>Acorus calamus</i>	Rhizome	$\alpha$ -asarone, $\beta$ -asarone	glioblastoma	Das <i>et al.</i> , 2019
5.	<i>Actaea racemosa</i>	Roots	Actein	liver and breast cancer	Rice <i>et al.</i> , 2007
6.	<i>Actinidia chinensis</i>	Fruit, root	Polysaccharide known as ACPS-R	colon cancer, breast cancer	He <i>et al.</i> , 2019
7.	<i>Aegiceras corniculatum</i>	All parts	Benzoquinones	gastric, liver cancer, myeloid leukaemia	Li <i>et al.</i> , 2020
8.	<i>Aegle marmelos</i>	Bark	Skimmianine, Lupeol	liver cancer	Mukhija <i>et al.</i> , 2015
9.	<i>Agapanthus africanus</i>	Root	Isoliquiritigenin	breast cancer	Srinivas & Afolayan, 2007
10.	<i>Agave Americana</i>	Leaves	Steroidal saponin, alkaloid, coumarin, isoflavonoid	breast cancer	Anajwala <i>et al.</i> , 2010
11.	<i>Ageratum conizoides</i>	Leaves	Kaempferol	colon, breast, prostate Cancer, leukemia	Adebayo <i>et al.</i> , 2010
12.	<i>Aglaila foveolata</i>	Fruits and twigs	Silvestrol	murine leukemia	Kim <i>et al.</i> , 2007a
13.	<i>Aglaila sylvestre</i>	Fruit, twings	Silvesterol	breast cancer, liver cancer	Hwang <i>et al.</i> , 2004
14.	<i>Agrimonia pilosa</i>	Herbs	Agrimonolide, flavonoid, triterpene, tannin and coumarin	cervical cancer, rhabdomyosarcoma	Koshiura <i>et al.</i> , 1985
15.	<i>Agropyron repens</i>	Rhizomes	Polysaccharide and mucilage	cervical cancer	Sharma <i>et al.</i> , 2011
16.	<i>Ailanthus Altissima</i>	Bark	Triterpene, tannin, saponin and quercetin-3-glucoside	breast cancer	Anderson <i>et al.</i> , 1983
17.	<i>Akebia quinata</i>	Friut	Flavonoid and saponin	liver cancer	Tascilar <i>et al.</i> , 2006
18.	<i>Alium cepa</i>	Flowers	Polyphenols	human cancer cells	Lee <i>et al.</i> , 2014
19.	<i>Allium sativum</i>	Leaves	Allylmercaptocysteine Allicin, allicin alliin, alliinase	lymphoma, cervix cancer	Karmakar <i>et al.</i> , 2011
20.	<i>Allium wallichii</i>	All parts	Steroids, terpenoids, Flavonoids	leukemia, glioblastoma and colon cancer	Bhandari <i>et al.</i> , 2017
21.	<i>Aloe barbadensis</i>	Leaves	Alexin B, emodin	leukaemia, stomach cancer	Shalabi <i>et al.</i> , 2015
22.	<i>Aloe ferox</i>	Leaves	Aloe-emodin, Emodin, Aloin	carcinoma, hepatoma cells, skin cancer	Jia <i>et al.</i> , 2008
23.	<i>Aloe vera</i>	Leaves	Alexin B, emodin	leukaemia, stomach	Shalabi <i>et al.</i> , 2015

				cancer	
24.	<i>Alpinia galangal</i>	Rhizomes	Kaempferide, Pinocembrin	breast cancer, lung cancer	Samarghandian <i>et al.</i> , 2014
25.	<i>Alstonia scholaris</i>	Root, bark	O-methylmacralstonine, talcarpine, villalstonine, pleiocarpamine	lung cancer	Monika & Singh, 2015
26.	<i>Amoora rohituka</i>	Stem bark	Amooranin	lymphocytic leukaemia	Chan <i>et al.</i> , 2011
27.	<i>Ananas comosus</i>	Fruit, stem	Bromelain	breast cancer	Chang <i>et al.</i> , 2019
28.	<i>Andrographis paniculata</i>	Leaves	Andrographolide	liver cancer	Ji <i>et al.</i> , 2007
29.	<i>Anemarrhena asphodeloides</i>	Root	Benzophenones	hepatocellular carcinoma	Shoemaker <i>et al.</i> , 2005
30.	<i>Angelica sinensis</i>	Root	N-butylidenephthalide	stomach cancer	Liao <i>et al.</i> , 2018
31.	<i>Annona crassiflora</i>	Leaves	Caffeic acid, sinapic acid, rutin	glioma, renal, ovary cancer	Formagio <i>et al.</i> , 2015
32.	<i>Annona coriacea</i>	Seeds	Ferulic acid, sinapic acid	glioma, lymphoid melanoma, lung, renal, ovary cancer	Formagio <i>et al.</i> , 2015
33.	<i>Annona squamosa</i>	Seed	Bullatacin	liver cancer	Biba <i>et al.</i> , 2013
34.	<i>Anthriscus sylvestris</i>	Root	Podophyllotoxin, Sylvestris	human leukaemia	Jeong <i>et al.</i> , 2007
35.	<i>Aphanamixis polystachya</i>	Bark	Amooranin	spleen and liver cancer	Jagetia & Venkatesha, 2012
36.	<i>Apium graveolens</i>	Seed	Apigenin	prostate cancer	Subhadra Devi <i>et al.</i> , 2011
37.	<i>Arachis hypogaea</i>	Peanut-skin	procyanidin A1	leukemia	Al-Snafi, 2014
38.	<i>Arctium lappa</i>	Root, bark, seed	Lappaol F	breast cancer	Sun <i>et al.</i> , 2014
39.	<i>Arcangelisia flava</i>	Root, stem	Protoberberine and 20-hydroxyecdysone	breast cancer	Pratama <i>et al.</i> , 2018
40.	<i>Argemone gracilentia</i>	All parts	Argemonine and Berberine	B-cell lymphoma, leukaemia	Leyva-Peralta <i>et al.</i> , 2015
41.	<i>Argemone mexicana</i>	Leaves	Pancorine, Argenaxine	gall bladder and breast cancer	Brahmachari <i>et al.</i> , 2013
42.	<i>Aristolochia contorta</i>	Root and fruit	Lysicamine, oxaaporphine, aristolochic acid	stomach cancer	Akindele <i>et al.</i> , 2014
43.	<i>Aronia melanocarpa</i>	Leaves	Polyphenol	leukemia	Thi & Hwang, 2018
44.	<i>Artemisia annua</i>	All parts	Artemisinin	liver, breast and pancreatic cancer	Efferth, 2017
45.	<i>Artemisia argyi</i>	All parts	Isoscopoletin	lung and colon cancer	McGovern <i>et al.</i> , 2010
46.	<i>Artemisia maritima</i>	All parts	Santonin	kidney and colon cancer	Qadir <i>et al.</i> , 2019
47.	<i>Artemisia vulgaris</i>	Flower, Leaves	Borneol	breast and kidney cancer	Gordanian <i>et al.</i> , 2014

48.	<i>Artocarpus obtusus</i>	Bark	Xanthones	leukemia, breast cancer	Hashim <i>et al.</i> , 2012
49.	<i>Asclepias curassavica</i>	Leaves	Asclepin, cardenolides	liver cancer	Li <i>et al.</i> , 2009
50.	<i>Asparagus cochinchinensis</i>	Root	Spirosteroids, asparacosins A	hepatocellular carcinoma	Park <i>et al.</i> , 2011
51.	<i>Asparagus officinalis</i>	Leaves	asparagamine A	lung, colon cancer	Bousserouel <i>et al.</i> , 2013
52.	<i>Asparagus racemosus</i>	Root	Shatavarins	breast, colon, kidney carcinoma	Mitra <i>et al.</i> , 2012
53.	<i>Aster tataricus</i>	All parts	Triterpene, monoterpene and epifriedelanol	head and neck cancer	Wang <i>et al.</i> , 2017
54.	<i>Astragalus gummijera</i>	Leaves	Endotoxin	lung cancer	Wu <i>et al.</i> , 2017
55.	<i>Astragalus membranaceus</i>	Leaves, root	Swainsonine	brain tumors, stomach cancer	William & Kwok, 2007
56.	<i>Azadirachata indica</i>	All parts	Azadirachtin, Nimbolide, Gedunin, Quercetin	cervical, ovarian, breast cancer	Moga <i>et al.</i> , 2018
57.	<i>Bacopa monnieri</i>	Whole plant	Cucurbitacins, betulinic acid	breast cancer	Mallick <i>et al.</i> , 2015a
58.	<i>Bauhinia racemosa</i>	Bark, Flowers	Kaempferol, quercetin	Ehrlich ascites carcinoma	Gupta <i>et al.</i> , 2004a
59.	<i>Bauhinia variegata</i>	Bark	Kaempferol galactoside	breast, lung and liver cancer	Sharma <i>et al.</i> , 2019
60.	<i>Berberis amurensis</i>	Fruit	Berberine	breast cancer	Ghafourian <i>et al.</i> , 2017
61.	<i>Berberis vulgaris</i>	Roots, bark	Berberine	breast, liver, colon cancers	Ghafourian <i>et al.</i> , 2017
62.	<i>Betula alba</i>	Bark	Betulinic acid	thyroid, breast, lung and colon carcinoma,	Rzeski <i>et al.</i> , 2006
63.	<i>Betula Sp.</i>	Leaves	Betulinic acid	human melanoma and leukaemia	Cragg & Newman, 2005
64.	<i>Betula utilis</i>	Bark	Betulinic acid, Betulin	Melanomas	Król <i>et al.</i> , 2015
65.	<i>Biophytum sensitivum</i>	Fruits	Amentoflavone	Dalton's lymphoma ascites, Ehrlich ascites carcinoma	Oh <i>et al.</i> , 2013
66.	<i>Bleekeria vitensis</i>	Leaves	Elliptinium	myelogenous leukaemia and breast cancer	Lauritano <i>et al.</i> , 2016
67.	<i>Blumea balsamifera</i>	Whole plant	Dihydroflavonol	hepatocellular carcinoma	Pang <i>et al.</i> , 2014a
68.	<i>Blumea lanceolaria</i>	Leaves	Borneol, caryophyllene	lymphoma	Norikura <i>et al.</i> , 2008
69.	<i>Boerhavia diffusa</i>	Root	Punarnavine	malignant melanoma cancer	Mishra <i>et al.</i> , 2014
70.	<i>Boswellia serrata</i>	Gum	Boswellic acid	prostate cancer	Garg & Deep, 2015
71.	<i>Brassica oleraceae</i>	red cabbage	Sulforaphane	epithelial carcinoma	Devi & Thangam, 2012
72.	<i>Broussonetia Papyrifera</i>	Fruits, Leaves, bark	2S-abyssinone Verubulin	glioblastoma, brain cancer	Pang <i>et al.</i> , 2014b
73.	<i>Brucca javanica</i>	Seed	Quassinoids	lymphoblastic	Zhao <i>et al.</i> , 2014

				leukemia	
74.	<i>Brucea antidysenterica</i>	Leaves, seed	Bruceantin	skin cancer	Cragg & Newman, 2005
75.	<i>Bryophyllum pinnatum</i>	Leaves	Bryophyllin A	cervical cancer	Mahata et al., 2012
76.	<i>Bryonia dioica</i>	Root	Myricetin	breast cancer	Benarba et al., 2019
77.	<i>Bulpleurum scorzoneraefolium</i>	Root	Saikosaponins	pancreatic, breast, cervical cancer	Law et al., 2014
78.	<i>Bursera microphylla</i>	Bark, leaves	Burseran	epidermoid carcinoma	Marcotullio et al., 2018
79.	<i>Butea monosperma</i>	Flower	Butrin	liver cancer	Choedon et al., 2010
80.	<i>Buxus hildebrandtii</i>	Leaves	cyclomicrobuxamine, buxamine-A, moenjodaramine	lung, urinary bladder carcinoma, breast cancer	Mothana et al., 2007
81.	<i>Cajanus cajan</i>	Root	Cajanol	breast cancer	Pal et al., 2011
82.	<i>Calotropis gigantea</i>	Flowers	Anhydrosophoradiol-3-acetate	Ehrlich's ascites carcinoma	Habib & Karim, 2013
83.	<i>Calotropis procera</i>	Latex	Calactin, calotropin, asceplin	breast cancer	Bhat et al., 2014
84.	<i>Calvatia caelata</i>	Fruit	Laccases, Calcaelin	liver, breast cancer	Ng et al., 2003
85.	<i>Camellia sinensis</i>	Leaves	Epigallocatechin gallate	brain, prostate, cervical and bladder cancer	Das et al., 2010
86.	<i>Camptotheca acuminata</i>	Fruits	Camptothecin	endometrial cancer, lung cancer	López-Meyer et al., 1994
87.	<i>Cannabis Sativa</i>	Leaves	Cannabinoid	lung, pancreas, breast, prostate and colorectal cancer	Appendino et al., 2011
88.	<i>Capsicum annum</i>	Fruit	Luteolin	colorectal cancer	Osman et al., 2015
89.	<i>Careya arborea</i>	Leaves	Quercetin, rutin, catechin	lung cancer, leukaemia	Panda et al., 2017
90.	<i>Carissa spinarum</i>	Fruit	Alkaloids, saponins, tannins, flavonoids	nasopharyngeal carcinoma	Sahreem et al., 2013
91.	<i>Cassia auriculata</i>	Leaves	Procyanidins, 3-O-beta-D-xylopyranosides	breast and larynx cancer	Meena et al., 2019
92.	<i>Cassia fistula</i>	Fruit	Inositol and 2-pyrrolidone	cervical cancer and breast cancer	Ali, 2014
93.	<i>Cassia senna</i>	Flower, Leaves	Quercimeritrin, scutellarein and rutin	breast cancer, prostate cancer	Gurukumar et al., 2010
94.	<i>Catharanthus roseus</i>	Leaves	Vinblastine, Vincristine	breast, ovary, cervix, lung cancer	Almagro et al., 2015
95.	<i>Catunaregum spinosa</i>	Leaves	Doxorubicin	breast cancer	Sandoval et al., 2016
96.	<i>Centaurea montana</i>	Seed	Montamine	colon cancer	Shoeb et al., 2006
97.	<i>Centaurea schischkinii</i>	Seed	Schischkinnin	colon cancer, rectal cancer	Shoeb et al., 2005
98.	<i>Centella asiatica</i>	Leaves	Asiatic acid	melanoma, breast, glioblastoma cancer	Baby et al., 1995
99.	<i>Cephalotaxus hainanensis</i>	Bark and Leaves	Harringtonine and homoharringtonine	leukemia	Han, 1994
100.	<i>Cephalotaxus</i>	All parts	Homoharringtonine,	myelodysplastic	Feldman et al., 1996

	<i>harringtonia</i>		cephalotaxine	syndrome, chronic myeloid leukemia	
101.	<i>Chelidonium majus</i>	Herbs	Sanguinarine and chelerythrine, chelidonine	pancreas cancer, colon cancer, breast cancer	Capistrano et al., 2015
102.	<i>Chelidonium majus var. asiaticum</i>	Herbs	Sanguinarine, chelerythrine, berberine	breast, lung, liver, colon cancer	Lee et al., 2005
103.	<i>Chimaphila umbellata</i>	All parts	Ericolin, arbutin, urson and tannin	breast cancer	Galván et al., 2008
104.	<i>Chrysanthemum morifolium</i>	Flowers	Heliantriol	gastric cancer	Ukiya et al., 2002
105.	<i>Cicer arietinum</i>	Seed	Bowman-Birk-type Protease	breast and prostate cancer	Magee et al., 2012
106.	<i>Cichorium intybus</i>	Leaves	Kaempferol, lutedin, epigenins and quercetin	breast and prostate cancer	Kandil et al., 2019
107.	<i>Cissus quadrangularis</i>	Leaves	Resveratrol, gallic acid, quercetin,	breast cancer	Suresh et al., 2019
108.	<i>Citrullus colocynthis</i>	Leaves	Cucurbitacin	breast cancer	Zheng et al., 2020
109.	<i>Citrus maxima</i>	Citrus peel	Hesperidin, neohesperidin and naringin	colon, prostate, lung and liver	KunduSen et al., 2011
110.	<i>Citrus medica</i>	All parts	limonin, nomilin, ichangin	breast cancer	Cirmi et al., 2017
111.	<i>Clausena lansium</i>	Seed	Clausenalanamid A,B	gastric, liver cancer	Maneerat et al., 2011
112.	<i>Cleistanthus collinus</i>	Bark	Cleistanthin, Collinusin	colon cancer, breast cancer, lung cancer	Pradheepkumar & Shanmugam, 1999
113.	<i>Clematis manshrica</i>	Flower, Leaves	1,4-benzoquinone, 5-oethyl-embelin, 15-carbon isoprenoid	liver cancer and blood cancer	Zhao et al., 2005
114.	<i>Clerodendrum serratum</i>	Leaves	Cryptojaponol, fortunin E	myeloid leukemia, hepatocellular carcinoma	Zalke et al., 2010
115.	<i>Clerodendrum viscosum</i>	Leaves	Tannic acid, quercetin, gallic acid, and rutin	breast, brain, lung cancer	Shendge et al., 2017
116.	<i>Coccinia grandis</i>	Leaves	Protease inhibitors	colon cancer	Satheesh & Murugan , 2011
117.	<i>Codonopsis pilosula</i>	Leaves	Exopolysaccharides	hepatocellular carcinoma	Zhang et al., 2019
118.	<i>Coix lachrymal jobi</i>	Seed	Trans-ferulyl stigmaterol	colorectal cancer	Manosroi et al., 2016
119.	<i>Colchicum Autumnale</i>	Leaves	Colchicine	Hodgkin's lymphoma, chronic granulocytic leukaemia	Lin et al., 2015
120.	<i>Colchicum luteum</i>	Corm, seed	Colchicine, demecolcine	stomach cancer, hypopharyngeal cancer	Kumar et al., 2017



121.	<i>Coleus forskholli</i>	Root	Forskolin	gastric carcinoma	Kanne et al., 2015
122.	<i>Combretum caffrum</i>	Bark, and fruit	Combretastatins	colon and leukemia and lung cancer	Lauritano et al., 2016
123.	<i>Commiphora myrrha</i>	Myrrh	2-Cyclohexen-1-one	breast, hepatocellular, carcinomas, cervical, skin cancer	Chen et al., 2013
124.	<i>Conyza Canadensis</i>	Root	Conyzapyranone A and B	epidermoid carcinoma	Csupor-Löffler et al., 2011
125.	<i>Cratoxylum formosum</i>	Root	Formoxanthone, xanthone macluraxanthone	breast, oral, cervical, colon cancer	Boonsri et al., 2006
126.	<i>Crinum asiaticum</i>	Bulb	Crinamine, criasiaticidine A	cervical cancer	Min et al., 2001
127.	<i>Crocus sativus</i>	Flower	Crocin, picrocrocin, crocetin, and safranal	sarcoma and oral cancer	Bakshi et al., 2009
128.	<i>Croton lechleri</i>	Leaves , resin	Taspine, ethnomedicine	colorectal cancer, prostate cancer	Montopoli et al., 2012
129.	<i>Croton macrobotrys</i>	Leaves	Corydine, salutaridine	leukemia and lung cancer	Motta et al., 2011
130.	<i>Curcuma longa</i>	Dried rhizome	Curcumin	colon adenocarcinoma	Ooko et al., 2017
131.	<i>Curcuma zedoaria</i>	All parts	$\alpha$ -Curcumene	overian cancer	Shin & Lee, 2013
132.	<i>Daphne genkwa</i>	Flower	Yuanhualine, yuanhuahine and yuanhuagine	lung cancer	Du et al., 2016
133.	<i>Daphne mezereum</i>	All parts	Mezerein	leukemia	Kupchan & Baxter, 1975
134.	<i>Datura metal</i>	All parts	Withonilides	breast cancer	Kumaran et al., 2014
135.	<i>Daucus carota</i>	Carrot juice	Falcarinol and lutein	lymphoid leukaemia	Shebaby et al., 2014
136.	<i>Debregeasia saeneb</i>	Stem	Tannins	internal tumors	Tariq et al., 2017
137.	<i>Dillenia pentagyna</i>	Bark, leaves	Betulinic acid, glutathione	ascites Dalton's lymphoma	Rosangkima & Prasad, 2004
138.	<i>Dioscorea collettii</i>	Rhizomes	Dioscin	liver and human gastric cancer	Hu & Yao, 2003
139.	<i>Diospyros chamaethamnus</i>	Root	Anthraquinones, coumarins	renal and breast cancer	Dushimemaria et al., 2017
140.	<i>Diphylleia grayi</i>	Root, stem	Diphyllin, deoxypodophyllotoxin	prostate cancer	Hu et al., 2016
141.	<i>Dracena cinnabari</i>	Resin	Dracophan, ametacyclophan, Cinnabaron	oral carcinogenesis	Al-Afifi et al., 2018
142.	<i>Dryopteris crassirhizoma</i>	Rhizomes	Filicinic, filicic acids, aspidinol and aspidin	squamous cell carcinoma	Peng et al., 2009
143.	<i>Duchesnea indica</i>	All parts	Polysaccharide	ovarian, liver cancer	Xiang et al., 2019
144.	<i>Dyosma versipllis</i>	Root	Podophyllotoxin	cancer	Yu et al., 1991
145.	<i>Dysoxylum binectariferum</i>	Stem	Rohitukine	leukemia	Safia et al., 2015
146.	<i>Echinacea angustifolia</i>	Root	Arabinogalactan, doxorubicin	cervical cancer, breast cancer	Huntimer et al., 2006

147.	<i>Echinophora cinerea</i>	All parts	Quercetin and kaempferol	bladder carcinoma, leukemia	Hosseini et al., 2017
148.	<i>Echinops setifer</i>	All parts	Echinopsine	skin cancer	Shaikh et al., 2014
149.	<i>Elusine coracana</i>	Seed	Ragi bifunctional inhibitor	myeloid leukemia cell and K562 cell line	Srikanth & Chen, 2016
150.	<i>Embelia ribes</i>	Fruit	Embelin	liver, pancreas, colon cancer	Ko et al., 2018
151.	<i>Embllica officinalis</i>	Fruit	Coumaric and ferulic acids	breast, liver, leukemia	Jose et al., 2001
152.	<i>Enterolobium Contortisiliquum</i>	Seed	Trypsin inhibitor	gastric and breast cancer	Nakahata et al., 2011
153.	<i>Erythronium americanum</i>	All parts	$\alpha$ -methyl-enebutyrolactone	breast cancer	Cavallito & Haskell, 1946
154.	<i>Erythroxyllum pervillei</i>	Root	Pervilleines	carcinoma	Restrepo et al., 2019
155.	<i>Euonymus alatus</i>	All parts	Triterpene, euolatin, steroid and sesquiterpene alkaloid	breast cancer	Zhai et al., 2016
156.	<i>Eupatorium cannabinum</i>	All parts	Sesquiterpene, lactone	colon cancer	Grigore et al., 2018
157.	<i>Euphorbia pepulus</i>	Leaves	3-Inganyl angelate	skin cancer	Ogbourne et al., 2004
158.	<i>Euphorbia semiperfoliata</i>	Leaves , stem	Jatrophane	pancreatic cancer	Bruni et al., 2004
159.	<i>Fagopyrum esculentum</i>	Seed	Amygdalin, rutin	T-acute lymphoblastic leukemia	Kim et al., 2007b
160.	<i>Ferula angulata</i>	Leaves and flower	Vinblastine and vincristine	gastric cancer	Heidari et al., 2014
161.	<i>Flacourtia jangomos</i>	Fruit and flower	Limonoid	carcinoma	George et al., 2017
162.	<i>Fragaria vesca</i>	Leaves and fruit	Flavonoid, tannin, borneol and ellagic acid	lung cancer	Erwiyani et al., 2016
163.	<i>Fritillaria thunbergii</i>	All parts	Alkaloid and peimine	lung cancer, liver cancer, breast cancer	Li et al., 2019a
164.	<i>Galium aparine</i>	All parts	Iridoid, polyphenolic acid, tannin, sitosterol	leukemia	Shi et al., 2016
165.	<i>Ginkgo biloba</i>	Leaves	Bilobalide	colon cancer	Li et al., 2019b
166.	<i>Gleditsia sinensis</i>	Thorns	Flavanocoumarin	breast cancer	Yu et al., 2017a
167.	<i>Gloriosa superba</i>	Seed	Colchicines	lung, colon, breast, pancreatic cancer	Balkrishna et al., 2019
168.	<i>Glycine max</i>	Seed	Soybean trypsin inhibitor	human ovarian cancer	Lima et al., 2017
169.	<i>Glycyrrhiza glabra</i>	Root	Glycyrrhizin	breast, gastrointestinal cancer	Nazmi et al., 2018
170.	<i>Glycyrrhiza uralensis</i>	Root	Isoliquiritigenin	lung cancer	Ayeka et al., 2016
171.	<i>Gossypium barbadense</i>	Seed, leaves	Gossypol	ovarian cancer, breast cancer, leukemia	Stipanovic et al., 2009

172.	<i>Gossypium hirsutum</i>	All parts	Gossypol	colorectal cancer	Stipanovic et al., 2009
173.	<i>Grsium bracteosum</i>	All parts	Podophyllotoxin	lung cancer, Kaposi sarcoma, lymphoma	Zi et al., 2018
174.	<i>Guibourtia coleosperma</i>	Root	Antraquinones, coumarins	breast and cervical cancer	Dushimemaria et al., 2017
175.	<i>Gunnera perperna</i>	Root	Z-venusol ,3-methyl 2-butenyl	breast cancer	Mathibe et al., 2016
176.	<i>Gynostemma pentaphyllum</i>	Aerial parts	Panaxadiol	leukemia ,colon cancer ,prostate carcinoma	Li et al., 2016
177.	<i>Gyrophora esculenta</i>	Lichen	$\beta$ -d-glucan	sarcoma 180	Shibata et al., 1968
178.	<i>Herba epimedii</i>	Leaves	Icariin, icaritin, icarisideII	prostate, lung, kidney and gastric cancer	Yong et al., 2017
179.	<i>Hydrastis canadensis</i>	All parts	Hydrastine, berberine, lactone berberastine, candaline	cervical , breast , prostate cancer	Karmakar et al., 2010
180.	<i>Hypericum perforatum</i>	Aerial parts	Hypericin	skin cancer, prostate cancer, breast cancer,	Mirmalek et al., 2016
181.	<i>Hypoxis argentea</i>	Corms	Mononyasine A and B.	colorectal and breast cancer	Ncube et al., 2013
182.	<i>Hypoxis colchicifolia</i>	Leaves , root	Hypoxoside, rooperol	breast cancer, colon cancer, leukemia	Ncube et al., 2013
183.	<i>Indigofera aspalathoides</i>	Leaves	Colchicine	hepatocellular carcinoma	Krishnasamy et al., 2016
184.	<i>Indigofera tinctoria</i>	Root, stem, leaves	Indirubins	lung cancer, epidermoid cancer	Renukadevi & Sultana, 2011
185.	<i>Ipomoeca batatas</i>	Root	Trypsin inhibitor protein	promyelocytic leukemia cells	Sugata et al., 2015
186.	<i>Iridaceaelatea pallasii</i>	All parts	Irisquinone, Kaempferol	pancreatic, lung, ovarian, breast cancer	Gupta et al., 2017
187.	<i>Iris kumaoensis</i>	Rhizomes	Benzoquinones	gastric, live cancer, myeloid leukaemia	Mahmood et al., 2002
188.	<i>Jatropha curcas</i>	Leaves, root	Curcusone A and B	mouse lymphoma, human cervix cancer	Aiyelaagbe et al., 2011
189.	<i>Junchus effuses</i>	All parts	Tridecanone, effusol, juncanol, phenylpropanoid, dehydroeffusol	leukemia	Gao et al., 2014
190.	<i>Justicia procumbens</i>	All parts	Justicidin, diphyllin	colorectal cancer, bladder cancer	Liu et al., 2018a
191.	<i>Kaempferia angustifolia</i>	Rhizomes	Flavokawain A, Kaempfolienol and zeylenol	breast, colon cancer	Tang et al., 2014
192.	<i>Kaempferia galangal</i>	Rhizomes	kaempulchraol, ethyl trans p-methoxycinnamate	lung cancer, human cholangiocarcinoma	Elshamy et al., 2019
193.	<i>Kaempferia pulchra</i>	Rhizomes	kolavelool, 2 $\beta$ -	pancreatic and	Elshamy et al., 2019

			hydroxykolavelool	cervix cancers	
194.	<i>Kaempferia rotunda</i>	Rhizomes	methyl- $\beta$ -D-galactopyranoside	Ehrlich ascites carcinoma	Elshamy et al., 2019
195.	<i>Khaya senegalensis</i>	Stem bark	3 $\alpha$ ,7 $\alpha$ -dideacetylkhivorin and 1-O-acetylkhayanolide B	breast cancer, colorectal cancer	Zhang et al., 2007
196.	<i>Knowltonia capensis</i>	Leaves	Ranunculin and protoanemonin	leukemia	Powrie, 1975
197.	<i>Lagerstroemia speciosa</i>	Leaves	Benzo(a)pyrene	lung cancer	Mousa et al., 2019
198.	<i>Lanata camara</i>	All parts	Camerine, isocamerine, micranine, lantanine, lantadene	lung cancer, liver cancer	Ghosh et al., 2010
199.	<i>Larrea mexicana</i>	Leaves	Chaparral	leukaemia and melanoma	Morán-Santibañez et al., 2019
200.	<i>Larrea tridentate</i>	All parts	Cyclolignans	breast cancer	Morán-Santibañez et al., 2019
201.	<i>Leea indica</i>	Leaves	Gallic acid	Ehrlich ascites carcinoma	Ghagane et al., 2017
202.	<i>Lens culinaris</i>	Seed	Lectin	colon cancer	Chan et al., 2015
203.	<i>Lentinus edodes</i>	All parts	Lentinan	sarcoma-180 in mice	Vetchinkina et al., 2016
204.	<i>Ligustrum lucidum</i>	Fruit	Oleanolic acid and ursolic acid	lung and pancreatic carcinoma, breast and prostate	Xia et al., 2011
205.	<i>Limonia acidissima</i>	Fruit	Stigmasterol	breast cancer	Dhakar et al., 2019
206.	<i>Linium album</i>	All parts	Etopside, teniposide, etophose, podophylotoxin	gastric cancer	Asl et al., 2018
207.	<i>Linum persicum</i>	Aerial parts	Aryltetralin	myeloid leukemia and lung carcinoma	Javidnia et al., 2010
208.	<i>Linum usitatissimum</i>	Leaves, flowers	Cynogenetic glycosides	breast cancer	Sakarkar & Deshmukh, 2011
209.	<i>Liriodendron Tulipifera</i>	Stem	Costunolide, tulipinolide, liriodenine,	KB (oral cancer), HT29 cell line	Kang et al., 2014
210.	<i>Lonicera japonica</i>	All parts	Luteoin, Kaempferol, biflavonoids	lung cancer	Park et al., 2017
211.	<i>Lupinus angustifolius</i>	Root	Lupin	breast cancer	Stapel et al., 2015
212.	<i>Lupinus arcticus</i>	Seed	Lupin	lymphoblastic leukemia	Deeg et al., 2012
213.	<i>Lupinus luteus</i>	Flowers	Genistein-8-C-glucoside, genistein	ovarian carcinoma	Antosiak et al., 2017
214.	<i>Macrotyloma uniflorum</i>	Leaves	Phytic acid, phenolic acid	human osteosarcoma	Prasad & Singh, 2015
215.	<i>Mamordica charantia</i>	All parts	$\alpha$ -momorcharin and $\beta$ -momorcharin	breast, colon and pancreatic cancer	Fang et al., 2019

216.	<i>Mappia foetida</i>	Bark	Camptothecin	leukemia, breast cancer	Wall & Wani, 1996
217.	<i>Matricaria chamomilla</i>	All parts	Apigenin	colorectal cancer	Al-Dabbagh et al., 2019
218.	<i>Macleaya cordata</i>	Root	Chelerythrine	breast cancer	Almeida et al., 2017
219.	<i>Medicago scutellata</i>	Seed	Trypsin inhibitor	human breast and cervical cancer	Lanza et al., 2004
220.	<i>Mimosa pudica</i>	All parts	L-Mimosine	erythroleukemic, lung adenocarcinoma	Jose et al., 2016
221.	<i>Momordica charantia</i>	Leaves, roots	Charantin	colon cancer and breast cancer	Fang et al., 2019
222.	<i>Morinda citrifolia</i>	Root	Damnacanthal	lung cancer, sarcomas	Brown, 2012
223.	<i>Moringa oleifera</i>	Leaves	Niazinine A	blood cancer	Al-Asmari et al., 2015
224.	<i>Nelumbo nucifera</i>	Flowers	Neferine	colon cancer	Zhao et al., 2017
225.	<i>Newbouldia laevis</i>	Root	2-acetylfuro-1,4-Naphthoquinone	pancreatic cancer, leukemia cancer	Eyong et al., 2005
226.	<i>Nicotiana tabacum</i>	Leaves	$\alpha$ -2,7,11-cyprotermine-4,6-diol	hepatocellular carcinoma	Yuan et al., 2019
227.	<i>Nigella sativa</i>	Seed	Thymoquinone	lymphocytic leukemia and liver cancer	Majdalawieh & Fayyad, 2016
228.	<i>Nothapodytes nimmoniana</i>	Bark	Camptothecin	colorectal and ovarian cancers	Mithun et al., 2017
229.	<i>Ochrosia elliptica</i>	All parts	Ellipticine, 9-methoxy ellipticine	breast cancer, carcinoma cells	Chen et al., 2017
230.	<i>Ocimum sanctum</i>	Leaves	Eugenol, orientin, vicianin, Luteolin	skin, liver, lung, breast cancer	Karthikeyan et al., 1999
231.	<i>Oldenlandia diffusa</i>	Stem, bark, leaves, fruit peel	Ursolic acid	lungs, ovary, uterus, stomach, liver, colon cancer	Gupta et al., 2004b
232.	<i>Olea europaea</i>	Leaves and oil	Oleic acid and oleuropein	skin cancer, leukemia	de Marino et al., 2014
233.	<i>Ononis spinosa</i>	Root	Formononetin	breast, colon, prostate, bladder, lung and cervical cancer	Jiang et al., 2019
234.	<i>Operculina turpethum</i>	Root	Glutathione, ascorbic acid and alpha tocopherol	breast cancer	Gupta & Ved, 2017
235.	<i>Oroxylum indicum</i>	Bark	Chrysin, baicalein and oroxylin-A	human leukemia	Dev et al., 2010
236.	<i>Oryza sativa</i>	Seed	Oryzanol, tocotrienol and tocopherol	fibrosarcoma, breast cancer	Pintha et al., 2014
237.	<i>Paeonia suffruticosa</i>	Seed	Oligostilbenes	lung, breast and bone cancer	Gao & He, 2017
238.	<i>Panax ginseng</i>	Root, leaves	Panaxadiol, panaxatriol	breast, ovary, lung, prostate and colon cancer	Du et al., 2013

239.	<i>Panax notoginseng</i>	Root	5-fluorouracil, panaxadiol and irinotecan	colon cancer	Wang et al., 2007a
240.	<i>Panax pseudoginseng</i>	Root	Fluorouracil, Protopanaxadiol	colon cancer	Wang et al., 2015
241.	<i>Panax quinquefolium</i>	Root	Ginsenoside, sesquiterpene	ovarian, breast, colon, liver cancer	Wang et al., 2008
242.	<i>Paris polyphylla</i>	Herbs	Polyphyllin	prostate cancer, lung cancer	Zhang et al., 2018a
243.	<i>Passiflora caerulea</i>	Flower	Chrysin	colorectal cancer	León et al., 2015
244.	<i>Patrinia heterophylla</i>	Root	Paclitaxel, etoposide, and irinotecan	gastric, cervical, colon, breast cancer	Sheng et al., 2019
245.	<i>Patrinia scabiosaefolia</i>	Essential oil	Caryophyllene oxide, caryophyllene, calarene	colon, liver, gastric cancer	Lin et al., 2018
246.	<i>Peganum harmala</i>	Root	Harmine	breast cancer	Ayoob et al., 2017
247.	<i>Peristrophe bicalyculata</i>	All parts	Caryophyllene, zingiberene	breast cancer	Ogunwande et al., 2010
248.	<i>Pestemon deustus</i>	All parts	Liriodendrin	colon, lung, skin and stomach cancer	Jolad et al., 1980
249.	<i>Pfaffia paniculata</i>	Root	Pfaffic acid and pfaffosides	breast cancer	Levitsky & Dembitsky, 2015
250.	<i>Phaleria macrocarpa</i>	Fruit	Gallic acid	colon, cervical, breast cancer	Hendra et al., 2011
251.	<i>Phaseolus acutifolius</i>	Seed	Tepary bean protease Inhibitor	leukemia L1210 and lymphoma MBL2	Sun et al., 2010
252.	<i>Phaseolus vulgaris</i>	Seed	Epicatechin, myricetin, formononetin, kaempferol	colorectal and breast cancer	Ombra et al., 2016
253.	<i>Picrorrhizia kurroa</i>	Root	Picosides, cucurbitacins, apocynin	breast and cervix cancer	Mallick et al., 2015b
254.	<i>Pisum sativum</i>	Pea	Apigenin, daidzein, genistein, and kaempferol	human colorectal and colon cancer	Rungruangmaitree & Jiraungkoorskul, 2017
255.	<i>Platycodon grandiflorum</i>	Root	Platycodin D	colorectal, lung, breast cancer	Jeon et al., 2019
256.	<i>Pleurotus sajor-caju</i>	All parts	Polysaccharides	leukemia and liver cancer	Finimundy et al., 2013
257.	<i>Plumbago zeylanica</i>	Leaves	Plumbagin	liver, pancreatic, leukemia, breast cancer	Chen et al., 2009
258.	<i>Podophyllum emodii</i>	Leaves	Podophyllotoxin	lung cancer, brain tumors, lymphoblastic leukemia	Liang et al., 2016
259.	<i>Podophyllum hexandrum</i>	Leaves	Podophyllotoxin	breast, ovary, lung, liver, bladder cancer	Kumar et al., 2015
260.	<i>Podophyllum peltatum</i>	Leaves	Podophyllotoxin	lung carcinoma	Eyberger et al., 2006

261.	<i>Polygonum cuspidatum</i>	All parts	Resveratrol, polydatin, emodin, chrysophanic acid	colorectal, skin, liver cancer	Wu et al., 2018
262.	<i>Polygonum multiflorum</i>	All parts	Saponin, flavonoid and vitamin A	breast cancer	Liu et al., 2018b
263.	<i>Potentilla chinensis</i>	All parts	Gallic acid and tannin	osteosarcoma cancer	Wan et al., 2016
264.	<i>Potentilla fulgens</i>	Root	Kaempferol, ellagic acid	breast, stomach, gastric cancer	Radhika et al., 2012
265.	<i>Prunella vulgaris</i>	All parts	Oleanolic acid, ursolic acid	breast , lung cancer	Hwang et al., 2013
266.	<i>Psoralea corylifolia</i>	Seed	Psoralidin, bavachinin, psoralen	stomach and prostate cancer	Wang et al., 2011
267.	<i>Pteris multifida</i>	Root	Pterokaurane	colorectal, lung cancer	Kim et al., 2017
268.	<i>Pueraria lobata</i>	Root	Puerarin	colon cancer	Zhang et al., 2018b
269.	<i>Pycnanthus angolensis</i>	Root	Pycnanthulignene	carcinoma,colon cancer	Nono et al., 2010
270.	<i>Pygeum africanum</i>	Bark	Phytosterol, triterpene	prostate cancer	Shenouda et al., 2007
271.	<i>Pyrus malus</i>	Fruit	Quercetin, procyanidin	liver, breast cancer	He & Liu, 2007
272.	<i>Raphanus sativus</i>	Root	Glucosinolates	liver cancer	Hanlon et al., 2007
273.	<i>Rheum palmatum</i>	Root	Emodin and aloe-emodin	breast cancer	Nho et al., 2015
274.	<i>Rhinacanthus nasuta</i>	Leaves ,root	Rhinacanthin-C, rhinacanthone	cervical and liver cancers	Boueroy et al., 2018
275.	<i>Rhus chinensis</i>	Leaves ,seed	Pentagalloylglucose and gallic acid	breast, leukemia, melanoma and liver cancer	Djakpo & Yao, 2010
276.	<i>Rhus succedanea</i>	Sap	Heptadecenylhydroquinone	colon, liver, cervical cancer	Wu et al., 2002
277.	<i>Rosmarinus officinalis</i>	Aerial parts	Carnosic acid, carnosol, rosmarinic acid, rosmanol	colorectal cancer, leukemia	Allegra et al., 2020
278.	<i>Rubia akane</i>	Root	Antraquinones	liver cancer	Moon et al., 2010
279.	<i>Rubia cordifolia</i>	Root, aerial parts	Rubidianin, purpurin, Xanthopurpurin	breast cancer, cervical cancer	Adwankar et al., 1980
280.	<i>Rubus idaeus</i>	Leaves	Flavonoid and tannin, ellagic acid	colorectal cancer	Veljkovic et al., 2018
281.	<i>Ruscus aculeatus</i>	Root	Ruscogenin and neoruscogenin	breast cancer	Cappelli et al., 1988
282.	<i>Ruscus hypophyllum</i>	Root	Ruscogenin, furostanol, spirostanol	promyelocytic leukemia	Mimakia et al., 2008
283.	<i>Salicornia europaea</i>	Leaves	Luteolin and quercetin	breast cancer	Samuel et al., 2017
284.	<i>Salvadora persica</i>	Leaves, root, bark	Ursolic and oleanolic acids	breast, ovary, colon cancer	Al Bratty et al., 2020
285.	<i>Salvia chinesis</i>	Aerial parts	Protocatechuic acid, salvianolic acid, xeractinol, kaempferol and apigenin	breast, lung, colon cancer	Zhao et al., 2015
286.	<i>Salvia hypargeia</i>	Root	Ferruginol, sapororthoquinone,	breast, lung, colon epidermoidal,	Ulubelen et al., 1999

			11,12-dioxoabieta-8,13-diene, taxodione, hypargenin	prostate cancer	
287.	<i>Salvia officinalis</i>	Essential oil	$\alpha$ -thujone, 1,8-cineole and camphor	prostate, breast, cervical cancer	Privitera et al., 2019
288.	<i>Salvia prionitis</i>	Root	3-keto-4-hydroxysaporthoquinone	leukemia and stomach cancer	Chen et al., 2002
289.	<i>Sanguinaria Canadensis</i>	Root	Sanguinarine	breast cancer	Almeida et al., 2017
290.	<i>Saussurea lappa</i>	Root	Sesquiterpene, costunolide	colon, skin, breast, lung cancer	Robinson et al., 2008
291.	<i>Saxifraga stolonifera</i>	Leaves	Bergenin, gallic acid, $\beta$ -sitosterol and quercetin	breast, gastric, esophageal cancer	Nagata et al., 2016
292.	<i>Schizophyllum commune</i>	All parts	Schizophyllan	gastric and neck cancer	Lemieszek & Rzeski, 2012
293.	<i>Scrophularia nodosa</i>	All parts	Iridoid, flavonoid and phenolic acid	astrocytoma	Lajimi et al., 2010
294.	<i>Scutellaria barbata</i>	All parts	Pheophorbide A	lung, ovarian cancer	Chen et al., 2017b
295.	<i>Selaginella tamariscina</i>	Leaves	Amentoflavone, hinokiflavone, apogenin	lung cancer	Yang et al., 2007
296.	<i>Semecarpus anacardium</i>	Kernel	3-(8(Z), 11(Z)-pentadecadienyl) catechol	human leukemia, breast, colon cancer	Nair et al., 2009
297.	<i>Smilax china</i>	Rhizomes	Kaempferol-7-O-beta-D-glucoside	breast, cervix cancer	Xu et al., 2008
298.	<i>Smilax glabra</i>	Rhizomes	Apigenin, astilbin, taxifolin, neoastilbin, isoastilbin, neoisoastilbin and engelitin	gastric, lung, colon, bladder, breast, liver, prostate and cervix cancer	She et al., 2015
299.	<i>Solanum aculeastrum</i>	Fruit	Tomatidine and solasodine	colon, cervical and breast cancer	Koduru et al., 2007
300.	<i>Solanum incanum</i>	Leaves	Solamargine, solasodine and solasonine	lung, breast and ovarian cancer	Yu et al., 2017b
301.	<i>Solanum lycopersicum</i>	Fruit	Lycopene	prostate and colon cancer	Hahm et al., 2011
302.	<i>solanum lyratum</i>	All parts	Sesquiterpenoids	breast, intestinal, lung, gastric cancer and hepatocarcinoma	Chen et al., 2017c
303.	<i>Solanum nigrum</i>	Leaves	Glycoalkaloids, polyphenols, polysaccharides, glycoproteins	breast cancer	Ling et al., 2019
304.	<i>Sophora flavescens</i>	Root	Matrine, oxymatrine and Kushen Injection	breast cancer	Cao & He, 2020



305.	<i>Sophora japonica</i>	Root	Matrine and oxymatrine	liver, colon, lung, cervix, ovary and breast cancers	Sun et al., 2012
306.	<i>Sophora subprostrata</i>	Root	Matrine and oxymatrine	liver, colon, lung, cervix, ovary and breast cancers	Sun et al., 2012
307.	<i>Stachys floridana</i>	Rhizomes	Rhamnose, glucuronic acid and arabinose	colon cancer	Ma et al., 2013
308.	<i>Stachys pilifera</i>	Leaves	Aucubin, carvacrol and harpagide	colon cancer	Kokhdan et al., 2018
309.	<i>Stevia rebaudiana</i>	Leaves	Steviol	gastrointestinal cancer	Chen et al., 2018a
310.	<i>swertia chirayita</i>	All parts	Amarogentin, mangiferin and antileishmanial,	colon, brain, breast cancer	Kumar & Van Staden, 2016
311.	<i>Sylibum marianum</i>	Leaves, flowers	Silymarin	gastric, colon cancer	Öztürk et al., 2015
312.	<i>Symphonia globulifera</i>	Leaves	Garcinol, xanthone V1	breast, cervix and leukemia	Lenta et al., 2007
313.	<i>Symplocos cochinchinensis</i>	Bark	Phloretin-2-glucoside	brain, liver, breast cancer	Abida et al., 2016
314.	<i>Syzygium cumini</i>	Fruit, seed	Bergenin, myricetin	cervical, breast cancer	Barh & Viswanathan, 2008
315.	<i>Tabebuia avellanedae</i>	Bark	Naphthofurandione	breast cancer	Telang et al., 2019
316.	<i>Tabebuia Impetiginosa</i>	Bark	Lapachol and $\beta$ -lapachone	breast, lung, cervical cancer	Pires et al., 2015
317.	<i>Tamarindus indica</i>	Seed kernel	Polysaccharide PST001	lung, oral, breast cancer	Aravind et al., 2012
318.	<i>Taraxacum mongolicum</i>	Root	Dandelion	breast cancer	Li et al., 2007
319.	<i>Taraxacum officinale</i>	leaves, flowers and roots	Lupeol, $\alpha$ -Amyrin, $\beta$ -sitosterol, and betulin	breast and prostate cancer	Sigstedt et al., 2008
320.	<i>Taxus baccata</i>	Needle	Paclitaxel	gastric and colon cancer	Durak et al., 2014
321.	<i>Taxus brevifolia</i>	Bark	Paclitaxel	ovarian and breast cancer	Wani et al., 1971
322.	<i>Taxus cuspidate</i>	Needles and twigs	5-Fluorouracil	breast, lung, prostate, gastric, melanoma	Shang et al., 2011
323.	<i>Taxus wallichiana</i>	Leaves and bark	Paclitaxel, taxiresinol	liver, colon, ovarian and breast cancer	Juyal et al., 2014
324.	<i>Terminalia arjuna</i>	Bark	Doxorubicin	lung and breast cancer	Sivalokanathan et al., 2006
325.	<i>Thuja occidentalis</i>	All parts	Thujone	skin cancer	Biswas et al., 2011
326.	<i>Thymus vulgaris</i>	All parts	Thymol, carvacrol, borneol, and p-cymene,	breast cancer, head and neck cancer	Kubatka et al., 2019
327.	<i>Tinospora cordifolia</i>	Stem	Berberine	colon cancer	Palmieri et al., 2019
328.	<i>Trifolium pratense</i>	Flower	Formononetin,	breast, colorectal	Ong et al., 2019

			biochanin A	and prostate cancer	
329.	<i>Trifolium repen</i>	Seed	Medicarpin, Formononetin	colon, breast and lung cancer	Sarno et al., 2020
330.	<i>Trigonella foenum graecum</i>	Root, seed	Trigonelline, diosgenin, protodioscin and dioscin	lung, breast, colon cancer	El Bairi et al., 2017
331.	<i>Tripterygium wilfordii</i>	Root	Triptolide and celastrol	melanoma, prostate and pancreatic cancers	Chen et al., 2018b
332.	<i>Triticum aestivum</i>	Shoot	Apigenin, quercetin, luteoline	lung and colon cancer	Mathankumar et al., 2015
333.	<i>Tulbaghia violaceae</i>	Leaves	Methyl- $\alpha$ -D-glucopyranoside	liver, breast. Lung colon cancer	Saibu et al., 2015
334.	<i>Tylophora Indica</i>	Leaves	Tylophorine	breast cancer	Dhiman et al., 2013
335.	<i>Typhonium flagelliforme</i>	All parts	Pheophorbide-a, pyropheophorbide-a and methyl pyropheophorbide-a	breast and lung cancer	Lai et al., 2010
336.	<i>Umblicaria esculenta</i>	All parts	Polysaccharides $\beta$ -glucans, $\alpha$ -glucans	leukemia	Sun et al., 2018
337.	<i>Uncaria tormentosa</i>	Bark	Mitraphylline	breast, lung, colon cancer	Pilarski et al., 2010
338.	<i>Vaccaria segetalis</i>	All parts	Segetoside I	hepatoma, breast, gastric, colon cancer	Firemping et al., 2016
339.	<i>Vaccinium macrocarpon</i>	Fruit	Hydroxycinnamoyl, ursolic acid	cervical, prostate cancer	Neto et al., 2008
340.	<i>Vaccinium stamineum</i>	Fruit	Resveratrol, quercetin, kaempferol	lung cancer, leukemia	Wang et al., 2007b
341.	<i>Ventilago madraspatana</i>	Bark	Physcion and emodin	skin melanoma, laryngeal carcinoma and lymphoma	Ghosh et al., 2010
342.	<i>Vernonia amygdalina</i>	Leaves	Paclitaxel, tamoxifen	breast cancer	Wong et al., 2013
343.	<i>Vernonia cinerea</i>	Leaves	Vernolide-A,B	melanoma	Pratheeshkumar & Kuttan, 2011
344.	<i>Vicia faba</i>	Fruit peels	Quercetin, quercetrin	breast and colon cancer	El-Feky et al., 2018
345.	<i>Viscum album</i>	Sprouts	Viscumin, chlorogenic acid, caffeic acid, sakuranetin	breast, cervix, colon, kidney, lung cancer	Khwaja et al., 1986
346.	<i>Vismia laurentii</i>	Seed	Laurenquinone A, B	colon and cervical cancer	Wabo et al., 2007
347.	<i>Vitis vinifera</i>	Seed, Leaves and fruits	Cyanidin, gallic acid, catechin, resveratrol	kidney, breast and colon cancer	Esfahanian et al., 2013
348.	<i>Vitex agnus- castu</i>	Fruit	Luteolin	ovarian, cervical and breast cancer	Ohyama et al., 2003
349.	<i>Vitex negundo</i>	Fruit and leaves	Chrysopenetin, luteolin-7-glucoside, casticin, iridoid	liver and pancreatic cancer	Kadir et al., 2013

350.	<i>Vitex rotundifolia</i>	All parts	Camphene, pinene and diterpene	breast cancer, colorectal cancer	Chaudhry <i>et al.</i> , 2019
351.	<i>Vitex trifolia</i>	Leaves	Casticin, vitexin and luteolin	monocytic cell line	Wee <i>et al.</i> , 2020
352.	<i>Wikstroemia indica</i>	Rhizome	Daphnoretin, chrysophanol, myricitrin and rutin	liver and human epithelial cancer	Lu <i>et al.</i> , 2012
353.	<i>Wikstroemia viridi</i>	All parts	Wikstromol	breast cancer, prostate cancer	Tandon & Rastogi, 1976
354.	<i>Withania aduensis</i>	Leaves and fruit	Methanol extract	lung, bladder and breast cancer	Mothana <i>et al.</i> , 2007
355.	<i>Withania riebeckii</i>	Leaves and fruit	Methanol extract	lung, bladder and breast cancer	Mothana <i>et al.</i> , 2007
356.	<i>Withania somnifera</i>	Root and leaves	Adriamycin	lung, colon, breast cancer	Yadav <i>et al.</i> , 2010
357.	<i>Xanthium strumarium</i>	Fruit, seed	Xanthatin, xanthostrumarin	hepatoma, lung, liver cancer	Al-Mekhlafi <i>et al.</i> , 2017
358.	<i>Yucca glauca</i>	Flowers	Polysaccharide	melanoma	Ali <i>et al.</i> , 1978
359.	<i>Zanthoxylum armatum</i>	Leaves	Cisplatin, mitomycin C and camptothecin	prostate, lung, cervical, bone cancer	Singh <i>et al.</i> , 2015
360.	<i>Zingiber officinale</i>	Rhizomes	6-Shogaol, gingerol	ovary cancer	Park <i>et al.</i> , 2014
361.	<i>Ziziphus jujube</i>	Fruits, eeds, leaves	Triterpenoids, linoleic acids	breast cancer	Tahergorabi <i>et al.</i> , 2015
362.	<i>Ziziphus nummularia</i>	Root, bark, fruit	Betulinic acid, betulin	ovarian cancer, breast cancer, leukemia	Ray & Dewanjee, 2015
363.	<i>Ziziphus rugosa</i>	Pericarp and seed	Betulinic acid	cytotoxicity against melanoma cells	Prema <i>et al.</i> , 2019
364.	<i>Ziziphus spina-christi</i>	Leaves	$\beta$ -sitosterol, rutin and quercetin	cervix, breast cancer	Jafarian <i>et al.</i> , 2014

### Medicinal plant parts and in vitro anticancer agents

Medicinal plants are the most commonly used in folk medicines throughout the world and contain different kind of phytochemicals, which act as an important source of anticancer agents. In our anticancer plant documentation, most of the anticancer agents are purified from the various part of the plant like Flower, flower stigmas, pericarp, sprouts, fruits, seeds, roots, rhizomes, stem, leaves, embryo and bark. Among the plant parts leaves consist of 23% of ethnomedicinal anticancer components. Leaves are the important parts of the plant is easily accessible and effective in cancer treatment followed by root (17%), all parts (13%), bark (11%), fruit (9%), seed (9%), flowers (5%), rhizomes (4%) and 9% of ethnomedicines were made up of pods, gum, bulb, juice, resin, thorns, lichen, corms, sap, needle, pericarp, kernel, aerial parts, peel, latex, twigs and

oil (Figure No. 2). Leaves are the most focused plant part of anticancer agents of Indian, Chinese and African medicine because of easy harvesting process and less side effect (Bhat *et al.*, 2013). Present review showed that the plant's leaves contain a variety of primary and secondary metabolites such as alkaloids, alkynes, terpenoids and phenolic compounds, roots and barks contain terpenoids and phenolic compounds.

*In-vitro* cancer methods are cancer cell lines are less expensive and less time consuming as compared to *in-vivo* assays. At the end of *in-vitro* cancer cell lines lead to the characterization of the action of specific cancer entities responding to drug or extract. That *in vitro* analysis data is used for selection of active components and concentration of extracts for *in-vivo* analysis can be carried out (Zips *et al.*, 2005). *In-vitro* methods are used to test the

plant phytochemicals against cancer cell lines in the form of extract or pure compound. There are various assays used for measuring the cancer reduction rate of anticancer medicinal plants like lactic dehydrogenase assay, Tryphan blue dye exclusion assay, MTT assay, Sulforhodamine B assay and XTT (Chanda & Nagani, 2013). Breast cancer was the most studied cancer cell lines among others with a 159 plants having a anti breast cancer activity followed by colorectal cancer (94), lung cancer (76), leukemia (59), liver cancer (47), cervical cancer (39), prostate cancer (32), gastric cancer (32), skin cancer (27), ovarian cancer (25), pancreatic cancer (12), lymphoma (10), bladder cancer (10) and 81 other type of cancer. Figure No. 3 shows the *in vitro* anticancer activity of medicinal plants in cancer cell lines.

**CONCLUSION**

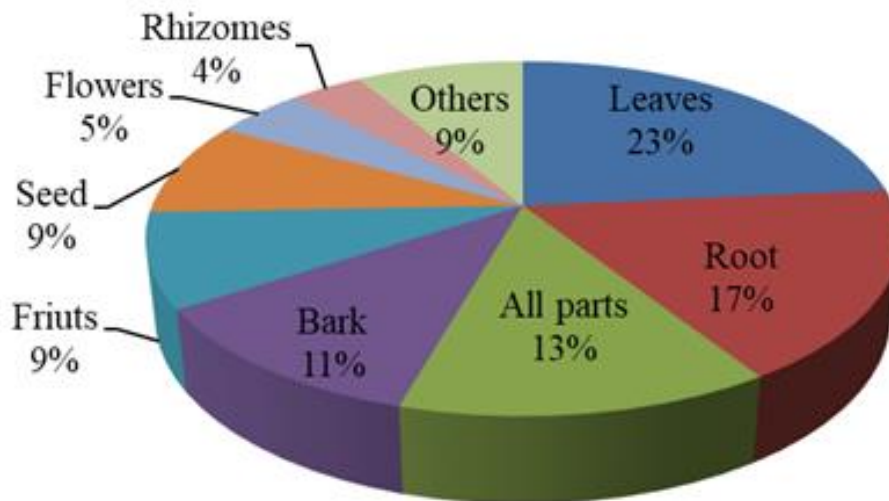
The use of chemical drugs for the cancer treatment

can cause worst side effects to the body. And no drug is totally effective or safe for the human body. These problems can be solved by phytochemical drugs derived from various medicinal plants. The present review has studied about 364 different varieties of medicinal plant parts with anticancerous activity. And the above-mentioned plant compounds play crucial roles in inhibiting the cancers or activating the proteins. The same component present in various plant species shows effects on the same cancer type but at various percentages. However, they still have not been able to claim its position in herbal market. We hope this study can benefit the lives of millions of cancer patients.

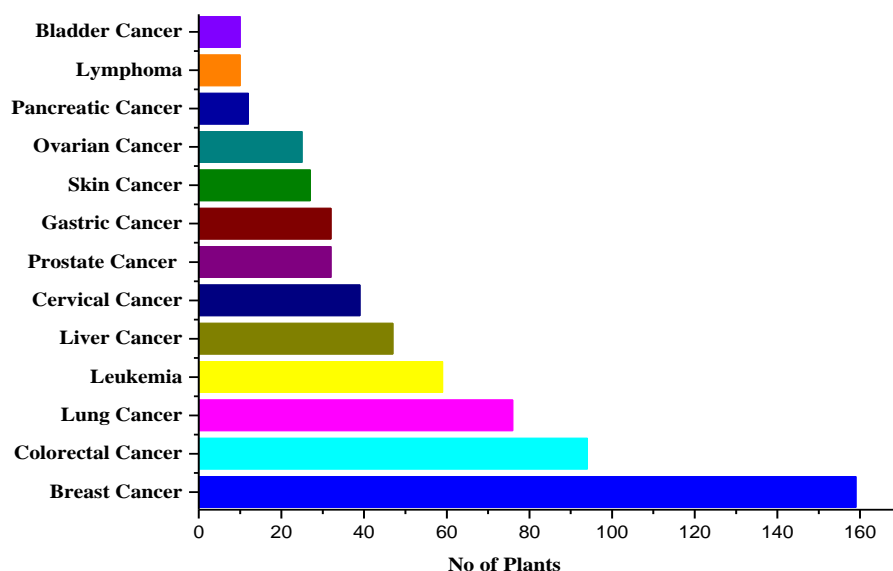
**ACKNOWLEDGMENTS**

We acknowledge the support of the Department of Biotechnology, Adhiyamaan College of Engineering (Autonomous), Hosur, Tamil Nadu, India.

**Figure No. 2**  
**Medicinal plant part based anticancer activity in cancer cell lines**



**Figure No. 3**  
***In vitro* anticancer activity of medicinal plants**



## REFERENCES

- Abida P, De Britto AJ, Antoney J, Raj TLS. 2016. Evaluation of *in vitro* anticancer activity of *Symplocos cochinchinensis* (Lour.) S. Moore bark. **Int J Herb Med** 4: 117 - 119.
- Adebayo AH, Tan NH, Akindahunsi AA, Zeng GZ, Zhang YM. 2010. Anticancer and antiradical scavenging activity of *Ageratum conyzoides* L. (Asteraceae). **Phcog Mag** 6: 62 - 66.  
<https://doi.org/10.4103/0973-1296.59968>
- Adwankar MK, Chitnis MP, Khandalekar DD, Bhadsavale CG. 1980. Anti-cancer activity of the extracts of *Rubia cordifolia* Linn. (NSC b668893). **Indian J Exp Biol** 18: 102.
- Aiyelaagbe OO, Hamid AA, Fattorusso E, Tagliatela-Scafati O, Schröder HC, Müller WE. 2011. Cytotoxic activity of crude extracts as well as of pure components from *Jatropha* species, plants used extensively in African Traditional Medicine. **Evid Based Complement Alternat Med** 134954.  
<https://doi.org/10.1155%2F2011%2F134954>
- Akindele AJ, Wani Z, Mahajan G, Sharma S, Aigbe FR, Satti N, Adeyemi OO, Mondhe DM. 2014. Anticancer activity of *Aristolochia ringens* Vahl. (Aristolochiaceae). **J Tradit Complement Med** 5: 35 - 41.  
<https://doi.org/10.1016%2Fj.jtcme.2014.05.001>
- Al Bratty M, Makeen H, Alhazmi H, Syame S, Abdalla A, Homeida H, Sultana S, Ahsan W, Khalid A. 2020. Phytochemical, cytotoxic, and antimicrobial evaluation of the fruits of Miswak plant, *Salvadora persica* L. **J Chem** 2020: 4521951 <https://doi.org/10.1155/2020/4521951>
- Al-Afifi NA, Alabsi AM, Bakri MM, Ramanathan A. 2018. Acute and sub-acute oral toxicity of *Dracaena cinnabari* resin methanol extract in rats. **BMC Complement Altern Med** 18: 50.  
<https://doi.org/10.1186%2Fs12906-018-2110-3>
- Al-Asmari AK, Albalawi SM, Athar MT, Khan AQ, Al-Shahrani H, Islam M. 2015. *Moringa oleifera* as an anti-cancer agent against breast and colorectal cancer cell lines. **PLoS One** 10: e0135814.  
<https://doi.org/10.1371%2Fjournal.pone.0135814>
- Al-Dabbagh B, Elhaty IA, Elhaw M, Murali C, Al Mansoori A, Awad B, Amin A. 2019. Antioxidant and anticancer activities of chamomile (*Matricaria recutita* L.). **BMC Res Notes** 12: 3.  
<https://doi.org/10.1186/s13104-018-3960-y>
- Ali MA. 2014. *Cassia fistula* Linn: A review of phytochemical and pharmacological studies. **Int J Pharm Sci Res** 5: 2125 - 2130. [http://doi.org/10.13040/IJPSR.0975-8232.5\(6\).2125-30](http://doi.org/10.13040/IJPSR.0975-8232.5(6).2125-30)
- Ali MS, Sharma GC, Asplund RO, Nevins MP, Garb S. 1978. Isolation of antitumor polysaccharide fractions from

- Yucca glauca* Nutt. (Liliaceae). **Growth** 42: 213 - 223.
- Allegra A, Tonacci A, Pioggia G, Musolino C, Gangemi S. 2020. Anticancer activity of *Rosmarinus officinalis* L.: mechanisms of action and therapeutic potentials. **Nutrients** 12: 1739.  
<https://doi.org/10.3390%2Fnu12061739>
- Almagro L, Fernandez-Perez F, Pedreno MA. 2015. Indole alkaloids from *Catharanthus roseus*: bioproduction and their effect on human health. **Molecules** 20: 2973 - 3000. <https://doi.org/10.3390/molecules20022973>
- Almeida IV, Fernandes LM, Biazi BI, Vicentini VEP. 2017. Evaluation of the anticancer activities of the plant alkaloids Sanguinarine and Chelerythrine in human breast adenocarcinoma cells. **Anticancer Agents Med Chem** 17: 1586 - 1592. <https://doi.org/10.2174/1871520617666170213115132>
- Al-Mekhlafi FA, Abutaha N, Mashaly AMA, Nasr FA, Ibrahim KE, Wadaan MA. 2017. Biological activity of *Xanthium strumarium* seed extracts on different cancer cell lines and *Aedes caspius*, *Culex pipiens* (Diptera: Culicidae). **Saudi J Biol Sci** 24: 817 - 821. <https://doi.org/10.1016%2Fj.sjbs.2016.07.003>
- Al-Snafi A. 2014. Chemical constituents and pharmacological activities of *Arachis hypogaea*-a review. **Int J Curr Pharm Res** 3: 615 - 623.
- Anajwala CC, Patel RM, Dakhara SL, Jariwala JK. 2010. *In vitro* cytotoxicity study of *agave americana*, *strychnos nuxvomica* and *areca catechu* extracts using mcf-7 cell line. **J Adv Pharm Technol Res** 1: 245 - 252.
- Anderson LA, Harris A, Phillipson JD. 1983. Production of cytotoxic canthin-6-one alkaloids by *Ailanthus altissima* plant cell cultures. **J Nat Prod** 46: 374 - 378.
- Antosiak A, Milowska K, Maczynska K, Rozalska S, Gabryelak T. 2017. Cytotoxic activity of genistein-8-C-glucoside form *Lupinus luteus* L. and genistein against human SK-OV-3 ovarian carcinoma cell line. **Med Chem Res** 26: 64 - 73. <https://doi.org/10.1007%2Fs00044-016-1725-5>
- Appendino G, Chianese G, Tagliatalata-Scalfati O. 2011. Cannabinoids: occurrence and medicinal chemistry. **Curr Med Chem** 18: 1085 - 1099. <https://doi.org/10.2174/092986711794940888>
- Aravind SR, Joseph MM, Varghese S, Balaram P, Sreelekha TT. 2012. Antitumor and immunopotentiating activity of polysaccharide PST001 isolated from the seed kernel of *Tamarindus indica*: an *in vivo* study in mice. **Scientific World J**:361382. <https://doi.org/10.1100%2F2012%2F361382>
- Asl EA, Mehrabadi JF, Afshar D, Noorbazargan H, Tahmasebi H, Rahimi A. 2018. Apoptotic effects of *Linum album* extracts on AGS human gastric adenocarcinoma cells and ZNF703 oncogene expression. **Asian Pac J Cancer Prev** 19: 2911 - 2916. <https://doi.org/10.22034%2FAPJCP.2018.19.10.2911>
- Ayeka PA, Bian Y, Mwitari PG, Chu X, Zhang Y, Uzayisenga R, Otachi EO. 2016. Immunomodulatory and anticancer potential of Gan cao (*Glycyrrhiza uralensis* Fisch.) polysaccharides by CT-26 colon carcinoma cell growth inhibition and cytokine IL-7 upregulation *in vitro*. **BMC Complement Altern Med** 16: 206. <https://doi.org/10.1186%2Fs12906-016-1171-4>
- Ayoob I, Hazari YM, Lone SH, Shakeel-u-Rehman, Khuroo MA, Fazili KM, Bhat KA. 2017. Phytochemical and cytotoxic evaluation of *peganum harmala*: structure activity relationship studies of harmine. **Chem Select** 2: 2965 - 2968. <https://doi.org/10.1002/slct.201700232>
- Baby TD, Kuttan G, Paddikkala. 1995. Cytotoxic and antitumour properties of certain taxa of Umbelliferae with special reference to *Centella asiatica* L. **J Ethnopharmacol** 48: 53 - 57. [https://doi.org/10.1016/0378-8741\(95\)01284-K](https://doi.org/10.1016/0378-8741(95)01284-K)
- Bakshi HA, Sam S, Anna F, Zeinab R, Ahmad SG, Sharma M. 2009. Crocin from Kashmiri saffron (*Crocus sativus*) induces *in vitro* and *in vivo* xenograft growth inhibition of Dalton's lymphoma (DLA) in mice. **Asian Pac J Cancer Prev** 10: 887 - 890.
- Balkrishna A, Das SK, Pokhrel S, Joshi A; Laxmi, Verma S, Sharma VK, Sharma V, Sharma N, Joshi CS. 2019. Colchicine: isolation, LC-MS QT of screening, and anticancer activity study of *Gloriosa superba* Seeds. **Molecules** 24: 2772. <https://doi.org/10.3390/molecules24152772>
- Barh D, Viswanathan G. 2008. *Syzygium cumini* inhibits growth and induces apoptosis in cervical cancer cell lines: a primary study. **Ecancermedicalsecience** 2: 83. <https://doi.org/10.3332%2Fecancer.2008.83>
- Benarba B, Elmallah A, Pandiella A. 2019. *Bryonia dioica* aqueous extract induces apoptosis and G2/M cell cycle arrest in MDA-MB 231 breast cancer cells. **Mol Med Rep** 20: 73 - 80. <https://doi.org/10.3892/mmr.2019.10220>
- Bhandari J, Muhammad B, Thapa P, Shrestha BG. 2017. Study of phytochemical, anti-microbial, anti-oxidant, and anti-cancer properties of *Allium wallichii*. **BMC Complement Altern Med** 17: 102.

- <https://doi.org/10.1186/s12906-017-1622-6>
- Bhat JA, Kumar M, Bussmann RW. 2013. Ecological status and traditional knowledge of medicinal plants in Kedarnath Wildlife Sanctuary of Garhwal Himalaya, India. **J Ethnobiol Ethnomed** 9: 1. <https://doi.org/10.1186/1746-4269-9-1>
- Bhat KS, Sharma A and Venkatramana DK. 2014. Antiproliferative effect of *Calotropis gigantean* (L.) R. Br. on breast cancer cells MCF-7. **Int J Pharm Sci Res** 5: 3918 - 3923. [https://doi.org/10.13040/IJPSR.0975-8232.5\(9\).3918-23](https://doi.org/10.13040/IJPSR.0975-8232.5(9).3918-23)
- Biba VS, Jeba MPW, Remani P. 2013. Differential effects of *Annona squamosa* seed extracts: antioxidant, antibacterial, cytotoxic and apoptotic study. **Int J Pharm Biol Sci** 4: 899 - 907.
- Biswas R, Mandal SK, Dutta S, Bhattacharyya SS, Boujedaini N, Khuda-Bukhsh AR. 2011. Thujone-rich fraction of *Thuja occidentalis* demonstrates major anti-cancer potentials: evidences from *in vitro* studies on A375 cells. **Evid Based Complement Alternat Med** 568148. <https://doi.org/10.1093%2Fecam%2Fneq042>
- Boonsri S, Karalai C, Ponglimanont C, Kanjana-opas A, Chantrapromma K. 2006. Antibacterial and cytotoxic xanthenes from the roots of *Cratoxylum formosum*. **Phytochemistry** 67: 723 - 727. <https://doi.org/10.1016/j.phytochem.2006.01.007>
- Boueroy P, Saensa-Ard S, Siripong P, Kanthawong S, Hahnvajjanawong C. 2018. Rhinacanthin-C extracted from *Rhinacanthus nasutus* (L.) inhibits cholangiocarcinoma cell migration and invasion by decreasing MMP-2, uPA, FAK and MAPK pathways. **Asian Pac J Cancer Prev** 19: 3605 - 3613. <https://doi.org/10.31557%2FAPJCP.2018.19.12.3605>
- Bousserouel S, Le Grandois J, Gossé F, Werner D, Barth SW, Marchioni E, Marescaux J, Raul F. 2013. Methanolic extract of white asparagus shoots activates TRAIL apoptotic death pathway in human cancer cells and inhibits colon carcinogenesis in a preclinical model. **Int J Oncol** 43: 394 - 404. <https://doi.org/10.3892%2Fijo.2013.1976>
- Brahmachari G, Gorai D, Roy R. 2013. *Argemone mexicana*: chemical and pharmacological aspects. **Braz J Pharmacog** 23: 559 - 575. <https://doi.org/10.1590/S0102-695X2013005000021>
- Brown AC. 2012. Anticancer activity of *Morinda citrifolia* (Noni) fruit: a review. **Phytother Res** 26: 1427 - 1440. <https://doi.org/10.1002/ptr.4595>
- Bruni R, Muzzoli M, Ballero M, Loi MC, Fantin G, Poli F, Sacchetti G. 2004. Tocopherols, fatty acids and sterols in seeds of four Sardinian wild Euphorbia species. **Fitoterapia** 75: 50 - 61. <https://doi.org/10.1016/j.fitote.2003.07.009>
- Cao X, He Q. 2020. Anti-tumor activities of bioactive phytochemicals in *Sophora flavescens* for breast cancer. **Cancer Manag Res** 12: 1457 - 1467. <https://doi.org/10.2147%2FCMAR.S243127>
- Capistrano IR, Wouters A, Lardon F, Gravekamp C, Apers S, Pieters L. 2015. *In vitro* and *in vivo* investigations on the antitumour activity of *Chelidonium majus*. **Phytomedicine** 22: 1279 - 1287. <https://doi.org/10.1016/j.phymed.2015.10.013>
- Cappelli R, Nicora M, Di Perri T. 1988. Use of extract of *Ruscus aculeatus* in venous disease in the lower limbs. **Drugs Exp Clin Res** 14: 277 - 283.
- Cavallito CJ, Haskell TH. 1946. Alpha-methylene butyrolactone from *Erythronium americanum*. **J Am Chem Soc** 68: 2332 - 2334. <https://doi.org/10.1021/ja01215a057>
- Chan LL, George S, Ahmad I, Gosangari SL, Abbasi A, Cunningham BT, Watkin KL. 2011. Cytotoxicity effects of *Amoora rohituka* and chittagonga on breast and pancreatic cancer cells. **Evid base Compl Altern Med** 2011: 860605. <https://doi.org/10.1155/2011/860605>
- Chan YS, Yu H, Xia L, Ng TB. 2015. Lectin from green speckled lentil seeds (*Lens culinaris*) triggered apoptosis in nasopharyngeal carcinoma cell lines. **Chin Med** 10: 25. <https://doi.org/10.1186%2Fs13020-015-0057-6>
- Chanda S, Nagani K. 2013. *In vitro* and *in vivo* methods for anticancer activity evaluation and some Indian medicinal plants processing anticancer properties: An overview. **J Pharmacog Phytochem** 2: 140 - 152.
- Chang TC, Wei PL, Makondi PT, Chen WT, Huang CY, Chang YJ. 2019. Bromelain inhibits the ability of colorectal cancer cells to proliferate via activation of ROS production and autophagy. **Plos One** 14: e0210274. <https://doi.org/10.1371/journal.pone.0210274>
- Chatti IB, Limem I, Boubaker J, Skandrani I, Kilani S, Bhouri W, Ben Sghaier M, Nefatti A, Ben Mansour H, Ghedira K, Chekir-Ghedira L. 2009. Phytochemical, antibacterial, antiproliferative, and antioxidant potentials and DNA damage-protecting activity of *Acacia salicina* extracts. **J Med Food** 12: 675 - 683.

- <https://doi.org/10.1089/jmf.2008.0120>
- Chaudhry GE, Jan R, Mohamad H, Tengku Muhammad TS. 2019. *Vitex rotundifolia* fractions induce apoptosis in human breast cancer cell line, MCF-7, via extrinsic and intrinsic pathways. **Res Pharm Sci** 14: 273 - 285. <https://doi.org/10.4103%2F1735-5362.258496>
- Chen X, Ding J, Ye Y, Zhang J. 2002. Bioactive abietane and seco-abietane diterpenoids from *Salvia prionitis*. **J Nat Prod** 65: 1016 - 1020. <https://doi.org/10.1021/np010561j>
- Chen CA, Chang HH, Kao CY, Tsai TH, Chen YJ. 2009. Plumbagin, isolated from *Plumbago zeylanica*, induces cell death through apoptosis in human pancreatic cancer cells. **Pancreatol** 9: 797 - 809. <https://doi.org/10.1159/000210028>
- Chen Y, Zhou C, Ge Z, Liu Y, Liu Y, Feng W, Li S, Chen G, Wei T. 2013. Composition and potential anticancer activities of essential oils obtained from myrrh and frankincense. **Oncol Lett** 6: 1140 - 1146. <https://doi.org/10.3892%2Fol.2013.1520>
- Chen AH, Liu QL, Ma YL, Jiang ZH, Tang JY, Liu YP, Chen GY, Fu YH, Xu W. 2017a. A new monoterpenoid indole alkaloid from *Ochrosia elliptica*. **Nat Prod Res** 31: 1490 - 1494. <https://doi.org/10.1080/14786419.2016.1277349>
- Chen CC, Kao CP, Chiu MM, Wang SH. 2017b. The anti-cancer effects and mechanisms of *Scutellaria barbata* D. Don on CL1-5 lung cancer cells. **Oncotarget** 8: 109340 - 109357. <https://doi.org/10.18632/oncotarget.22677>
- Chen M, Wu J, Zhang XX, Wang Q, Yan SH, Wang HD, Liu SL, Zou X. 2017c. Anticancer activity of sesquiterpenoids extracted from *Solanum lyratum* via the induction of mitochondria-mediated apoptosis. **Oncol Lett** 13: 370 - 376. <https://doi.org/10.3892%2Fol.2016.5404>
- Chen J, Xia Y, Sui X, Peng Q, Zhang T, Li J, Zhang J. 2018a. Steviol, a natural product inhibits proliferation of the gastrointestinal cancer cells intensively. **Oncotarget** 9: 26299 - 26308. <https://doi.org/10.18632/oncotarget.25233>
- Chen SR, Dai Y, Zhao J, Lin L, Wang Y, Wang Y. 2018b. A mechanistic overview of triptolide and celastrol, natural products from *Tripterygium wilfordii* Hook F. **Front Pharmacol** 9: 104. <https://doi.org/10.3389/fphar.2018.00104>
- Choedon T, Shukla SK, Kumar V. 2010. Chemopreventive and anticancer properties of the aqueous extract of flowers of *Butea monosperma*. **J Ethnopharmacol** 129: 208 - 213. <https://doi.org/10.1016/j.jep.2010.03.011>
- Cirmi S, Maugeri A, Ferlazzo N, Gangemi S, Calapai G, Schumacher U, Navarra M. 2017. Anticancer potential of *Citrus Juices* and their extracts: A systematic review of both preclinical and clinical studies. **Front Pharmacol** 8: 420. <https://doi.org/10.3389%2Ffphar.2017.00420>
- Cragg GM, Newman DJ. 2005. Plants as a source of anti-cancer agents. **J Ethnopharmacol** 100: 72 - 79. <https://doi.org/10.1016/j.jep.2005.05.011>
- Csupor-Löffler B, Hajdú Z, Zupkó I, Molnár J, Forgo P, Vasas A, Kele Z, Hohmann J. 2011. Antiproliferative constituents of the roots of *Conyza canadensis*. **Planta Medica** 77: 1183 - 1188. <https://doi.org/10.1055/s-0030-1270714>
- Das B, Swamy A, Koti B, Gadad P. 2019. Experimental evidence for use of *Acorus calamus* (asarone) for cancer chemoprevention. **Heliyon** 5: e01585. <https://doi.org/10.1016/j.heliyon.2019.e01585>
- Das I, Das S, Saha T. 2010. Saffron suppresses oxidative stress in DMBA-induced skin carcinoma: a histopathological study. **Acta Histochem** 112: 317 - 327. <https://doi.org/10.1016/j.acthis.2009.02.003>
- De Marino S, Festa C, Zollo F, Nini A, Antenucci L, Raimo G, Iorizzi M. 2014. Antioxidant activity and chemical components as potential anticancer agents in the olive Leaves (*Olea europaea* L. cv leccino) decoction. **Anticancer Agents Med Chem** 14: 1376 - 1385. <https://doi.org/10.2174/1871520614666140804153936>
- Deeg K, Eichhorn T, Alexie G, Kretschmer N, Andersch K, Bauer R, Efferth T. 2012. Growth inhibition of human acute lymphoblastic CCRF-CEM leukemia cells by medicinal plants of the West-Canadian Gwich'in Native Americans. **Nat Prod Bioprospect** 2: 35 - 40. <https://doi.org/10.1007%2Fs13659-012-0013-4>
- Dev LR, Anurag M, Rajiv G. 2010. *Oroxylum indicum*: A review. **Phcog J** 2: 304 - 310. [https://doi.org/10.1016/S0975-3575\(10\)80121-X](https://doi.org/10.1016/S0975-3575(10)80121-X)
- Devi JR, Thangam EB. 2012. Mechanisms of anticancer activity of sulforaphane from *Brassica oleracea* in HEP-2 human epithelial carcinoma cell line. **Asian Pac J Cancer Prev** 13: 2095 - 2100.



- <https://doi.org/10.7314/apjcp.2012.13.5.2095>
- Dhakar A, Chorotiya P, Meena M, Singh C, Purvia RP, Adlakha MK. 2019. Pharmacological properties and phytochemical of *Limonia acidissima*: a review. **World J Pharm Res** 8: 637 - 645.  
<https://doi.org/10.20959/wjpr201910-15730>
- Dhiman M, Khanna A, Manju SL. 2013. A new phenanthroindolizidine alkaloid from *Tylophora indica*. **Chem Pap** 67: 245 - 248. <https://doi.org/10.2478/s11696-012-0265-9>
- Djakpo O, Yao W. 2010. *Rhus chinensis* and *Galla Chinensis*--folklore to modern evidence: review. **Phytother Res** 24: 1739 - 1747. <https://doi.org/10.1002%2Fptr.3215>
- Du GJ, Wang CZ, Qi LW, Zhang ZY, Calway T, He TC, Du W, Yuan CS. 2013. The synergistic apoptotic interaction of panaxadiol and epigallocatechin gallate in human colorectal cancer cells. **Phytother Res** 27: 272 - 277. <https://doi.org/10.1002/ptr.4707>
- Du WJ, Yang XL, Song ZJ, Wang JY, Zhang WJ, He X, Zhang RQ, Zhang CF, Li F, Yu CH, Wang CZ, Yuan CS. 2016. Antitumor activity of total flavonoids from *Daphne genkwa* in colorectal cancer. **Phytother Res** 30: 323 - 330. <https://doi.org/10.1002/ptr.5540>
- Durak ZE, Büber S, Devrim E, Kocaoğlu H, Durak I. 2014. Aqueous extract from *Taxus baccata* inhibits adenosine deaminase activity significantly in cancerous and noncancerous human gastric and colon tissues. **Pharmacogn Mag** 10: 214 - 216. <https://doi.org/10.4103%2F0973-1296.133232>
- Dushimemaria F, Preez CID, Mumbengegwi DR. 2017. Randomized anticancer and cytotoxicity activities of *Guibourtia coleosperma* and *Diospyros chamaethamnus*. **Afr J Tradit Complement Altern Med** 14: 1 - 7. <https://doi.org/10.21010%2Fajtcam.v14i4.1>
- Efferth T. 2017. From ancient herb to versatile, modern drug: *Artemisia annua* and artemisinin for cancer therapy. **Semin Canc Biol** 46: 65 - 83. <https://doi.org/10.1016/j.semcancer.2017.02.009>
- El Bairi K, Ouzir M, Agnieszka N, Khalki L. 2017. Anticancer potential of *Trigonella foenum graecum*: cellular and molecular targets. **Biomed Pharmacother** 90: 479 - 491.  
<https://doi.org/10.1016/j.biopha.2017.03.071>
- El-Feky A, Elbatany M, Mounier M. 2018. Anti-cancer potential of the lipoidal and flavonoidal compounds from *Pisum sativum* and *Vicia faba* peels. **Egypt J Basic Appl Sci** 5: 258 - 264.  
<https://doi.org/10.1016/j.ejbas.2018.11.001>
- Elshamy AI, Mohamed TA, Essa AF, Abd-ElGawad AM, Alqahtani AS, Shahat AA, Yoneyama T, Farrag ARH, Noji M, El-Seedi HR, Umeyama A, Paré PW, Hegazy MF. 2019. Recent advances in kaempferia phytochemistry and biological activity: A comprehensive review. **Nutrients** 11: 2396.  
<https://doi.org/10.3390%2Fnu11102396>
- Erwiyani AR, Martodihardjo S, Lukitaningsih E. 2016. Antioxidant activity of dried strawberry juices (*fragaria vesca* l.) emulgel preparation using candlenut oil and it's diffusion. **Indonesian J Pharm** 27: 145 - 151.  
<http://doi.org/10.14499/indonesianjpharm27iss3pp145>
- Esfahanian Z, Behbahani M, Shanehsaz M, Hessami MJ, Nejatian MA. 2013. Evaluation of anticancer activity of fruit and leave extracts from virus infected and healthy cultivars of *Vitis vinifera*. **Cell J** 15: 116 - 123.
- Eyberger AL, Dondapati R, Porter JR. 2006. Endophyte fungal isolates from *Podophyllum peltatum* produce podophyllotoxin. **J Nat Prod** 69: 1121 - 1124. <https://doi.org/10.1021/np060174f>
- Eyong KO, Krohn K, Hussain H, Folefoc GN, Nkengfack AE, Schulz B, Hu Q. 2005. Newbouldiaquinone and newbouldiamide: a new naphthoquinone-antraquinone coupled pigment and a new ceramide from *Newbouldia laevis*. **Chem Pharm Bull** 53: 616 - 619. <https://doi.org/10.1248/cpb.53.616>
- Fang EF, Froetscher L, Scheibye-Knudsen M, Bohr VA, Wong JH, Ng TB. 2019. Emerging antitumor activities of the bitter melon (*Momordica charantia*). **Curr Protein Pept Sci** 20: 296 - 301.  
<https://doi.org/10.2174%2F1389203719666180622095800>
- Feldman EJ, Seiter KP, Ahmed T, Baskind P, Arlin ZA. 1996. Homoharringtonine in patients with myelodysplastic syndrome (MDS) and MDS evolving to acute myeloid leukemia. **Leukemia** 10: 40 - 42.
- Finimundy TC, Gambato G, Fontana R, Camassola M, Salvador M, Moura S, Hess J, Henriques JA, Dillon AJ, Roesch-Ely M. 2013. Aqueous extracts of *Lentinula edodes* and *Pleurotus sajor-caju* exhibit high antioxidant capability and promising *in vitro* antitumor activity. **Nutr Res** 33: 76 - 84.  
<https://doi.org/10.1016/j.nutres.2012.11.005>
- Firemping CK, Zhang HY, Wang Y, Chen J, Cao X, Deng W, Zhou J, Wang Q, Tong SS, Yu J, Xu X. 2016.

- Segetoside I, a plant-derived bisdesmosidic saponin, induces apoptosis in human hepatoma cells *in vitro* and inhibits tumor growth *in vivo*. **Pharmacol Res** 110: 101 - 110.  
<https://doi.org/10.1016/j.phrs.2016.04.032>
- Formagio ASN, Vieira MC, Volobuff CRF, Silva MS, Matos AI, Cardoso CAL, Foglio MA, Carvalho JE. 2015. *In vitro* biological screening of the anticholinesterase and antiproliferative activities of medicinal plants belonging to Annonaceae. **Braz J Med Bio Res** 48: 308 - 315.  
<https://doi.org/10.1590/1414-431x20144127>
- Galván IJ, Mir-Rashed N, Jessulat M, Atanya M, Golshani A, Durst T, Petit P, Amiguet VT, Boekhout T, Summerbell R, Cruz I, Arnason JT, Smith ML. 2008. Antifungal and antioxidant activities of the phytomedicine pipsissewa, *Chimaphila umbellata*. **Phytochemistry** 69: 738 - 746.  
<https://doi.org/10.1016/j.phytochem.2007.09.007>
- Gao X, Liu Y, Deeb D, Arbab AS, Gautam SC. 2014. Anticancer activity of pristimerin in ovarian carcinoma cells is mediated through the inhibition of pro-survival Akt/NF- $\kappa$ B/mTOR signaling. **J Exp Ther Oncol** 10: 275 - 283.
- Gao Y, He C. 2017. Anti-proliferative and anti-metastasis effects of ten oligostilbenes from the seeds of *Paeonia suffruticosa* on human cancer cells. **Oncol Lett** 13: 4371 - 4377. <https://doi.org/10.3892%2Fol.2017.5982>
- Garg A, Darokar MP, Sundaresan V, Faridi U, Luqman S, Rajkumar S. 2007. Anticancer activity of some medicinal plants from high altitude evergreen elements of Indian Western Ghats. **J Res Educ Indian Med** 13: 1 - 6.
- Garg P, Deep A. 2015. Anti-cancer potential of boswellic acid: a mini review. **Hygeia J Drug Med** 7: 18 - 27.  
<https://doi.org/10.15254/H.J.D.Med.7.2015.147>
- GBD 2016 Risk Factors Collaborators. 2016. Global, regional, and national comparative risk assessment of 79 behavioural, environmental and occupational, and metabolic risks or clusters of risks, 1990-2015: a systematic analysis for the Global Burden of Disease Study 2015. **Lancet** 388: 1659 - 1724.  
[https://doi.org/10.1016/s0140-6736\(16\)31679-8](https://doi.org/10.1016/s0140-6736(16)31679-8)
- George SA, Bhadrans S, Sudhakar M, Harini BP. 2017. Comprehensive *in vitro* evaluation of pharmacological activities of selected plant extracts and gc-ms profiling of *Flacourtia jangomas* flower extract. **Asian J Pharm Clin Res** 10: 237 - 244. <https://doi.org/10.22159/ajpcr.2017.v10i5.17419>
- Ghafourian E, Sadeghifard N, Pakzad I, Valizadeh N, Maleki A, Jafari F, Ghiasvand N, Abdi J, Shokoohinia Y, Ghafourian S. 2017. Ethanolic extract of *Berberis vulgaris* fruits inhibits the proliferation of MCF-7 breast cancer cell line through induction of apoptosis. **Infect Disord Drug Targets** 17: 192 - 198.  
<https://doi.org/10.2174/1871526517666170531113759>
- Ghagane SC, Puranik SI, Kumbar VM, Nerli RB, Jalalpure SS, Hiremath MB. 2017. *In-vitro* antioxidant and anticancer activity of *Leea indica* leaves extracts on human prostate cancer cell lines. **Integr Med Res** 6: 79 - 87. <https://doi.org/10.1016/j.imr.2017.01.004>
- Ghosh S, Das Sarma M, Patra A, Hazra B. 2010. Anti-inflammatory and anticancer compounds isolated from *Ventilago madraspatana* Gaertn. *Rubia cordifolia* Linn. and *Lantana camara* Linn. **J Pharm Pharmacol** 62: 1158 - 1166. <https://doi.org/10.1111/j.2042-7158.2010.01151.x>
- Gordanian B, Behbahani M, Carapetian J, Fazilati M. 2014. *In vitro* evaluation of cytotoxic activity of flower, leaves, stem and root extracts of five Artemisia species. **Res Pharm Sci** 9: 91 - 96.
- Grigore A, Neagu G, Dobre N, Albulescu A, Ionita L, Ionita C, Albulescu R. 2018. Evaluation of antiproliferative and protective effects of *Eupatorium cannabinum* L. extracts. **Turk J Biol** 42: 334 - 344.  
<https://doi.org/10.3906%2Fbiy-1803-72>
- Gupta M, Mazumder UK, Kumar RS, Kumar TS. 2004a. Antitumor activity and antioxidant role of *Bauhinia racemosa* against Ehrlich ascites carcinoma in Swiss albino mice. **Acta Pharmacol Sin** 25: 1070 - 1076.
- Gupta S, Zhang D, Yi J, Shao J. 2004b. Anticancer activities of *Oldenlandia diffusa*. **J Herb Pharmacother** 4: 21 - 33.
- Gupta S, Ved A. 2017. *Operculina turpethum* (Linn.) Silva Manso as a medicinal plant species: A review on bioactive components and pharmacological properties. **Pharmacogn Rev** 11: 158 - 166.  
[https://doi.org/10.4103%2Fphrev.phrev\\_6\\_17](https://doi.org/10.4103%2Fphrev.phrev_6_17)
- Gupta VK, Singh R, Sharma B. 2017. Phytochemicals mediated signalling pathways and their implications in cancer chemotherapy: Challenges and opportunities in phytochemicals based drug development: A review.

**Bio Chem Comp** 5: 2. <http://doi.org/10.7243/2052-9341-5-2>

- Gurukumar D, Rathi MA, Meenakshi P, Thirumoorthi L, Sunitha M, Gopalakrishnan VK. 2010. Anticancer activity of *Cassia senna* (L) against prostate carcinogenesis. **J Pharm Res** 3: 3028 - 3031.
- Habib MR, Karim MR. 2013. Effect of anhydrosophoradiol-3-acetate of *Calotropis gigantea* (Linn.) flower as antitumor agent against Ehrlich's ascites carcinoma in mice. **Pharmacol Rep** 65: 761 - 767.  
[https://doi.org/10.1016/s1734-1140\(13\)71057-0](https://doi.org/10.1016/s1734-1140(13)71057-0)
- Hahm ER, Moura MB, Kelley EE, Van Houten B, Shiva S, Singh SV. 2011. Withaferin A-induced apoptosis in human breast cancer cells is mediated by reactive oxygen species. **Plos One** 6: e23354.  
<https://doi.org/10.1371/journal.pone.0023354>
- Han R. 1994. Highlight on the studies of anticancer drugs derived from plants in china. **Stem cells** 12: 53 - 63.  
<https://doi.org/10.1002/stem.5530120110>
- Hanlon PR, Webber DM, Barnes DM. 2007. Aqueous extract from Spanish black radish (*Raphanus sativus* L. Var. niger) induces detoxification enzymes in the HepG2 human hepatoma cell line. **J Agric Food Chem** 55: 6439 - 6446. <https://doi.org/10.1021/jf070530f>
- Hashim NM, Rahmani M, Ee GCL, Sukari M, Yahayu M, Oktima W, Ali A, Go R. 2012. Antiproliferative activity of xanthenes isolated from *Artocarpus obtusus*. **J Biomed Biotechnol** 1 - 9.  
<https://doi.org/10.1155/2012/130627>
- He X, Fang J, Chen X, Zhao Z, Li Y, Meng Y, Huang L. 2019. *Actinidia chinensis* Planch: A review of chemistry and pharmacology. **Front Pharmacol** 10: 1236. <https://doi.org/10.3389/fphar.2019.01236>
- Heidari S, Akrami H, Gharaei R, Jalili A, Mahdiuni H, Golezar E. 2014. Anti-tumor activity of *Ferulago angulata* Boiss. extract in gastric cancer cell line via induction of apoptosis. **Iran J Pharm Res** 13: 1335 - 1345.
- Hendra R, Ahmad S, Oskoueian E, Sukari A, Shukor MY. 2011. Antioxidant, anti-inflammatory and cytotoxicity of *Phaleria macrocarpa* (Boerl.) Scheff fruit. **BMC Complement Altern Med** 11: 110.  
<https://doi.org/10.1186%2F1472-6882-11-110>
- Hichri F, Znati M, Bouajila J, Ben Jannet H. 2018. New cytotoxic sesquiterpene lactones from *Achillea cretica* L. growing in Tunisia. **J Asian Nat Prod Res** 20: 344 - 351.  
<https://doi.org/10.1080/10286020.2017.1355362>
- Hosseini Z, Lorigooini Z, Rafieian-Kopaei M, Shirmardi HA, Solati K. 2017. A review of botany and pharmacological effect and chemical composition of *Echinophora* species growing in Iran. **Pharmacogn Res** 9: 305 - 312. [https://doi.org/10.4103%2Fpr.pr\\_22\\_17](https://doi.org/10.4103%2Fpr.pr_22_17)
- Hu K, Yao X. 2003. The cytotoxicity of methyl protodioscin against human cancer cell lines *in vitro*. **Cancer Invest** 21: 389 - 393. <https://doi.org/10.1081/cnv-120018230>
- Hu S, Zhou Q, Wu WR, Duan YX, Gao ZY, Li YW, Lu Q. 2016. Anticancer effect of deoxypodophyllotoxin induces apoptosis of human prostate cancer cells. **Oncol Lett** 12: 2918 - 2923.  
<https://doi.org/10.3892/ol.2016.4943>
- Huntimer ED, Halaweish FT, Chase CC. 2006. Proliferative activity of *Echinacea angustifolia* root extracts on cancer cells: Interference with doxorubicin cytotoxicity. **Chem Biodivers** 3: 695 - 703.  
<https://doi.org/10.1002/cbdv.200690071>
- Hwang BY, Su BN, Chai H, Mi Q, Kardono LB, Afriastini JJ, Riswan S, Santarsiero BD, Mesecar AD, Wild R, Fairchild CR, Vite GD, Rose WC, Farnsworth NR, Cordell GA, Pezzuto JM, Swanson SM, Kinghorn AD. 2004. Silvestrol and episilvestrol, potential anticancer rocaglate derivatives from *Aglaila silvestris*. **J Org Chem** 69: 3350 - 3358.
- Hwang YJ, Lee EJ, Kim HR, Hwang KA. 2013. *In vitro* antioxidant and anticancer effects of solvent fractions from *Prunella vulgaris* var. lilacina. **BMC Complement Altern Med** 13: 310.  
<https://doi.org/10.1186%2F1472-6882-13-310>
- Jafarian A, Zolfaghari B, Shirani K. 2014. Cytotoxicity of different extracts of arial parts of *Ziziphus spina-christi* on HeLa and MDA-MB-468 tumor cells. **Adv Biomed Res** 3: 38.  
<https://doi.org/10.4103%2F2277-9175.125727>
- Jagetia GC, Venkatesha VA. 2012. Preclinical determination of the anticancer activity of Rohituka (*Aphanamixis polystachya*) in Ehrlich ascites tumor-bearing mice. **Med Aromat Plant Sci Biotechnol** 6: 42 - 51.
- Jamshidi-Kia F, Lorigooini Z, Amini-Khoei H. 2018. Medicinal plants: past history and future perspective. **J Herbmed Pharmacol** 7: 1 - 7. <https://doi.org/10.15171/jhp.2018.01>

- Javidnia K, Miri R, Rezai H, Jafari A, Azarmehr A, Amirghofran Z. 2010. Cytotoxic activity and aryltetraline lignans of *Linum persicum* Kotschy ex Boiss. **Iran J Pharm Res** 3: 74 - 74. <https://doi.org/10.22037/ijpr.2010.518>
- Jelassi A, Zardi-Bergaoui A, Ben Nejma A, Belaiba M, Bouajila J, Ben Jannet H. 2014. Two new unusual monoterpene acid glycosides from *Acacia cyclops* with potential cytotoxic activity. **Bioorg Med Chem Lett** 24: 3777 - 3781. <https://doi.org/10.1016/j.bmcl.2014.06.075>
- Jeon D, Kim SW, Kim HS. 2019. Platycodin D, a bioactive component of *Platycodon grandiflorum*, induces cancer cell death associated with extreme vacuolation. **Anim Cells Syst** 23: 118 - 127. <https://doi.org/10.1080%2F19768354.2019.1588163>
- Jeong GS, Kwon OK, Park BY, Oh SR, Ahn KS, Chang MJ, Oh WK, Kim JC, Min BS, Kim YC, Lee HK. 2007. Lignans and coumarins from the roots of *Anthriscus sylvestris* and their increase of caspase-3 activity in HL-60 cells. **Biol Pharm Bull** 30: 1340 - 1343. <https://doi.org/10.1248/bpb.30.1340>
- Ji L, Liu T, Liu J, Chen Y, Wang Z. 2007. Andrographolide inhibits human hepatoma-derived Hep3B cell growth through the activation of c-Jun N-terminal kinase. **Planta Med** 73: 1397 - 1401. <https://doi.org/10.1055/s-2007-990230>
- Jia Y, Zhao G, Jia J. 2008. The effects of *Aloe ferox* Miller and *Aloe arborescens* Miller on wound healing. **J Ethnopharmacol** 120: 181 - 189.
- Jiang D, Rasul A, Batool R, Sarfraz I, Hussain G, Mateen Tahir M, Qin T, Selamoglu Z, Ali M, Li J, Li X. 2019. Potential anticancer properties and mechanisms of action of formononetin. **Biomed Res Int**: 5854315. <https://doi.org/10.1155%2F2019%2F5854315>
- Jolad SD, Hoffmann JJ, Cole JR, Tempesta MS, Bates RB. 1980. Cytotoxic agent from *Penstemon deustus* (Scrophulariaceae): isolation and stereochemistry of liriodendrin, a symmetrically substituted furofuranoid lignan diglucoside. **J Org Chem** 45: 1327 - 1329. <https://doi.org/10.1021/jo01295a038>
- Jose JK, Kuttan G, Kuttan R. 2001. Antitumour activity of *Embllica officinalis*. **J Ethnopharmacol** 75: 65 - 69. [https://doi.org/10.1016/s0378-8741\(00\)00378-0](https://doi.org/10.1016/s0378-8741(00)00378-0)
- Jose J, Dhanya AT, Haridas KR, Sumesh Kumar TM, Jayaraman S, Variyar EJ, Sudhakaran S. 2016. Structural characterization of a novel derivative of myricetin from *Mimosa pudica* as an anti-proliferative agent for the treatment of cancer. **Biomed Pharmacother** 84: 1067 - 1077. <https://doi.org/10.1016/j.biopha.2016.10.020>
- Juyal D, Thawani V, Thaledi S, Joshi M. 2014. Ethnomedical properties of *Taxus wallichiana* Zucc. (Himalayan yew). **J Tradit Complement Med** 4: 159 - 161. <https://doi.org/10.4103%2F2225-4110.136544>
- Kadir FA, Kassim NM, Abdulla MA, Yehye WA. 2013. PASS-predicted *Vitex negundo* activity: antioxidant and antiproliferative properties on human hepatoma cells-an *in vitro* study. **BMC Complement Altern Med** 13: 343. <https://doi.org/10.1186%2F1472-6882-13-343>
- Kandil A, Abou-Elella F, El Shemy H. 2019. Cytotoxic profile activities of ethanolic and methanolic extracts of chicory plant (*Cichorium intybus* L.). **J Radiat Res Appl Sci** 12: 106 - 111. <https://doi.org/10.1080/16878507.2019.1594136>
- Kang YF, Liu CM, Kao CL, Chen CY. 2014. Antioxidant and anticancer constituents from the leaves of *Liriodendron tulipifera*. **Molecules** 19: 4234 - 4245. <https://doi.org/10.3390%2Fmolecules19044234>
- Kanne H, Burte NP, Prasanna V, Gujjula R. 2015. Extraction and elemental analysis of *Coleus forskohlii* extract. **Pharmacogn Res** 7: 237 - 241. <https://doi.org/10.4103%2F0974-8490.157966>
- Karmakar SR, Biswas SJ, Khuda-Bukhsh AR. 2010. Anti-carcinogenic potentials of a plant extract (*Hydrastis canadensis*): I. Evidence from *in vivo* studies in mice (*Mus musculus*). **Asian Pac J Cancer Prev** 11: 545 - 551.
- Karmakar S, Choudhury SR, Banik NL, Ray SK. 2011. Molecular mechanisms of anti-cancer action of garlic compounds in neuroblastoma. **Anticancer Agents Med Chem** 11: 398 - 407. <https://doi.org/10.2174/187152011795677553>
- Karthikeyan K, Gunasekaran P, Ramamurthy N, Govindasamy S. 1999. Anticancer activity of *Ocimum Sanctum*. **Pharm Biol** 37: 285 - 290. <https://doi.org/10.1076/phbi.37.4.285.5801>
- Khwaja TA, Dias CB, Pentecost S. 1986. Recent studies on the anticancer activities of mistletoe (*Viscum album*) and its alkaloids. **Oncology** 43: 42 - 50. <https://doi.org/10.1159/000226419>
- Kim S, Hwang BY, Su BN, Chai H, Mi Q, Kinghorn AD, Wild R, Swanson SM. 2007a. Silvestrol, a potential

- anticancer rocaglate derivative from *Aglaia foveolata*, induces apoptosis in LNCaP cells through the mitochondrial/apoptosome pathway without activation of executioner caspase-3 or -7. **Anticancer Res** 27: 2175 - 2183.
- Kim SH, Cui CB, Kang IJ, Kim SY, Ham SS. 2007b. Cytotoxic effect of buckwheat (*Fagopyrum esculentum* Moench) hull against cancer cells. **J Med Food** 10: 232 - 238. <https://doi.org/10.1089/jmf.2006.1089>
- Kim JW, Kim HP, Sung SH. 2017. Cytotoxic pterins from *Pteris multifida* roots against HCT116 human colon cancer cells. **Bioorg Med Chem Lett** 27: 3144 - 3147. <https://doi.org/10.1016/j.bmcl.2017.05.034>
- Ko JH, Lee SG, Yang WM, Um JY, Sethi G, Mishra S, Shanmugam MK, Ahn KS. 2018. The application of embelin for cancer prevention and therapy. **Molecules** 23: 621. <https://doi.org/10.3390%2Fmolecules23030621>
- Koduru S, Grierson D, van de Venter M, Afolayan A. 2007. Anticancer activity of steroid alkaloids isolated from *Solanum aculeastrum*. **Pharm Biol** 45: 613 - 618. <https://doi.org/10.1080/13880200701538690>
- Kokhdan EP, Sadeghi H, Ghafoori H, Sadeghi H, Danaei N, Javadian H, Aghamaali MR. 2018. Cytotoxic effect of methanolic extract, alkaloid and terpenoid fractions of *Stachys pilifera* against HT-29 cell line. **Res Pharm Sci** 13: 404 - 412. <https://doi.org/10.4103%2F1735-5362.236833>
- Koshiura R, Miyamoto K, Ikeya Y, Taguchi H. 1985. Antitumor activity of methanol extract from roots of *Agrimonia pilosa* Ledeb. **Jpn J Pharmacol** 38: 9 - 16. <https://doi.org/10.1254/jjp.38.9>
- Król SK, Kiełbus M, Rivero-Müller A, Stepulak A. 2015. Comprehensive review on betulin as a potent anticancer agent. **Bio Med Res Int**: 584189. <https://doi.org/10.1155/2015/584189>
- Krishnamurthi K. 2000. Screening of natural products for anticancer and antidiabetic properties. **Health Adm** 20: 69 - 75.
- Krishnasamy L, Selvam MM, Ravikrishnan B. 2016. Anticancer property of colchicine isolated from *Indigofera aspalathoids*. **Res J Pharm Technol** 9: 386 - 390. <https://doi.org/10.5958/0974-360X.2016.00069.X>
- Kubatka P, Uramova S, Kello M, Kajo K, Samec M, Jasek K, Vybohova D, Liskova A, Mojzic J, Adamkov M, Zubor P, Smejkal K, Svajdlenka E, Solar P, Samuel SM, Zulli A, Kassayova M, Lasabova Z, Kwon TK, Pec M, Danko J, Büsselberg D. 2019. Anticancer activities of *Thymus vulgaris* L. in experimental breast carcinoma *in vivo* and *in vitro*. **Int J Mol Sci** 20: 1749. <https://doi.org/10.3390%2Fijms20071749>
- Kumar P, Pal T, Sharma N, Kumar V, Sood H, Chauhan RS. 2015. Expression analysis of biosynthetic pathway genes vis-à-vis podophyllotoxin content in *Podophyllum hexandrum* Royle. **Protoplasma** 252: 1253 - 1262. <https://doi.org/10.1007/s00709-015-0757-x>
- Kumar V, Van Staden J. 2016. A Review of *Swertia chirayita* (Gentianaceae) as a traditional medicinal plant. **Front Pharmacol** 6: 308. <https://doi.org/10.3389/fphar.2015.00308>
- Kumar A, Sharma PR, Mondhe DM. 2017. Potential anticancer role of colchicine-based derivatives: an overview. **Anticancer Drugs** 28: 250 - 262. <https://doi.org/10.1097/cad.0000000000000464>
- Kumaran S, Banu BN, Julie J, Abirami J, Kumareasan R, Muthukumaran T, Rajasree S, Jothi JK. 2014. Anticancer activity of *Datura metel* in MCF-7 cell line. **Asian J Pharm Clin Res** 7: 181 - 183.
- KunduSen S, Gupta M, Mazumder U, Halder P, Saha P, Bala A. 2011. Antitumor activity of *Citrus maxima* (Burm.) Merr. leaves in Ehrlich's ascites carcinoma cell-treated mice. **ISRN Pharmacol** 1 - 4. <https://doi.org/10.5402/2011/138737>
- Kupchan SM, Baxter RL. 1975. Mezerein: antileukemic principle isolated from *Daphne mezereum* L. **Science** 187: 652 - 653. <https://doi.org/10.1126/science.1114315>
- Kuper H, Adami HO, Boffetta P. 2002. Tobacco use, cancer causation and public health impact. **J Intern Med** 251: 455 - 466. <https://doi.org/10.1046/j.1365-2796.2002.00993.x>
- Lai CS, Mas RH, Nair NK, Mansor SM, Navaratnam V. 2010. Chemical constituents and *in vitro* anticancer activity of *Typhonium flagelliforme* (Araceae). **J Ethnopharmacol** 127: 486 - 494. <https://doi.org/10.1016/j.jep.2009.10.009>
- Lajimi AA, Rezaie-Tavirani M, Mortazavi SA, Barzegar M, Moghadamnia SH, Rezaee MB. 2010. Study of anti cancer property of *Scrophularia striata* extract on the human astrocytoma cell line (1321). **Iran J Pharm Res** 9: 403 - 410.
- Lanza A, Tava A, Catalano M, Ragona L, Singuaroli I, Robustelli della Cuna FS, Robustelli della Cuna G. 2004. Effects of the *Medicago scutellata* trypsin inhibitor (MsTI) on cisplatin-induced cytotoxicity in human breast and cervical cancer cells. **Anticancer Res** 24: 227 - 233.

- Lauritano H, Andersen JH, Hansen E, Albrigtsen M, Escalera L, Esposit F, Helland K, Hanssen K, Romano G, Lanora A. 2016. Bioactivity screening of microalgae for antioxidant, anti-inflammatory, anticancer, anti-diabetes, and antibacterial activities. **Front Mar Sci** 3: 68. <https://doi.org/10.3389/fmars.2016.00068>
- Law BY, Mo JF, Wong VK. 2014. Autophagic effects of Chaihu (dried roots of *Bupleurum chinense* DC or *Bupleurum scorzoneraefolium* WILD). **Chin Med** 9: 21. <https://doi.org/10.1186%2F1749-8546-9-21>
- Lee J, Shon MY, Jang DS, Ha TJ, Hwang SW, Nam SH., Seo E, Park KH, Yang M. 2005. Cytotoxic isoquinoline alkaloids from *Chelidonium majus* var. *asiaticum*. **Agric Chem Biotechnol** 48: 198 - 201.
- Lee WS, Yi SM, Yun JW, Jung JH, Kim DH, Kim HJ, Chang SH, Kim G, Ryu CH, Shin SC, Hong SC, Choi YH, Jung JM. 2014. Polyphenols isolated from *Allium cepa* L. induces apoptosis by induction of p53 and suppression of Bcl-2 through inhibiting PI3K/Akt signaling pathway in AGS human cancer cells. **J Cancer Prev** 19: 14 - 22. <https://doi.org/10.15430/jcp.2014.19.1.14>
- Lemieszek M, Rzeski W. 2012. Anticancer properties of polysaccharides isolated from fungi of the Basidiomycetes class. **Contemp Oncol** 16: 285 - 289. <https://doi.org/10.5114%2Fwo.2012.30055>
- Lenta BN, Vonthron-Sénécheau C, Weniger B, Devkota KP, Ngoupayo J, Kaiser M, Naz Q, Choudhary MI, Tsamo E, Sewald N. 2007. Leishmanicidal and cholinesterase inhibiting activities of phenolic compounds from *Allanblackia monticola* and *Symphonia globulifera*. **Molecules** 12: 1548 - 1557. <https://doi.org/10.3390%2F12081548>
- León IE, Cadavid-Vargas JF, Tiscornia I, Porro V, Castelli S, Katkar P, Desideri A, Bollati-Fogolin M, Etcheverry SB. 2015. Oxidovanadium (IV) complexes with chrysin and silibinin: anticancer activity and mechanisms of action in a human colon adenocarcinoma model. **J Biol Inorg Chem** 20: 1175 - 1191. <https://doi.org/10.1007/s00775-015-1298-7>
- Levitsky DO, Dembitsky VM. 2015. Anti-breast cancer agents derived from plants. **Nat Prod Bioprospect** 5: 1 - 16. <https://doi.org/10.1007/s13659-014-0048-9>
- Leyva-Peralta MA, Robles-Zepeda RE, Garibay-Escobar A, Ruiz-Bustos E, Alvarez-Berber LP, Gálvez-Ruiz JC. 2015. *In vitro* anti-proliferative activity of *Argemone gracilentia* and identification of some active components. **BMC Comp Alter Med** 15: 13. <https://doi.org/10.1186/s12906-015-0532-8>
- Li J, Li QC, Chen C, Hao X, Liu H. 2009. Cytotoxic activity of cardenolides and cardenolide glycosides from *Asclepias curassavica*. **Bioorganic Med Chem Lett** 19: 1956 - 1959. <https://doi.org/10.1016/j.bmcl.2009.02.045>
- Li Y, Lin W, Huang J, Xie Y, Ma W. 2016. Anti-cancer effects of *Gynostemma pentaphyllum* (Thunb.) Makino (Jiaogulan). **Chin Med** 11: 43. <https://doi.org/10.1186%2Fs13020-016-0114-9>
- Li XH, He XR, Zhou YY, Zhao HY, Zheng WX, Jiang ST, Zhou Q, Li PP, Han SY. 2017. *Taraxacum mongolicum* extract induced endoplasmic reticulum stress associated-apoptosis in triple-negative breast cancer cells. **J Ethnopharmacol** 206: 55 - 64. <https://doi.org/10.1016/j.jep.2017.04.025>
- Li H, Hung A, Li M, Yang AWH. 2019a. *Fritillariae Thunbergii* bulbus: Traditional uses, phytochemistry, pharmacodynamics, pharmacokinetics and toxicity. **Int J Mol Sci** 20: 1667. <https://doi.org/10.3390%2Fijms20071667>
- Li M, Li B, Xia ZM, Tian Y, Zhang D, Rui WJ, Dong JX, Xiao FJ. 2019b. Anticancer effects of five biflavonoids from *Ginkgo Biloba* L. male flowers *in vitro*. **Molecules** 24: 1496. <https://doi.org/10.3390%2Fmolecules24081496>
- Li Y, Dong C, Xu MJ, Lin WH. 2020. New alkylated benzoquinones from mangrove plant *Aegiceras corniculatum* with anticancer activity. **J Asian Nat Prod Res** 22: 121 - 130. <https://doi.org/10.1080/10286020.2018.1540604>
- Liang Z, Zhang J, Zhang X, Li J, Zhang X, Zhao C. 2016. Endophytic fungus from *Sinopodophyllum emodi* (Wall.) Ying that produces podophyllotoxin. **J Chromatogr Sci** 54: 175 - 178. <https://doi.org/10.1093/chromsci/bmv124>
- Liao KF, Chiu TL, Huang SY, Hsieh TF, Chang SF, Ruan JW, Chen SP, Pang CY, Chiu SC. 2018. Anti-cancer effects of radix *Angelica Sinensis* (Danggui) and N-Butylidenephthalide on gastric cancer: Implications for REDD1 activation and mTOR inhibition. **Cell Physiol Biochem** 48: 2231 - 2246. <https://doi.org/10.1159/000492641>
- Lima A, Oliveira J, Saúde F, Mota J, Ferreira RB. 2017. Proteins in soy might have a higher role in cancer prevention than previously expected: Soybean protein fractions are more effective MMP-9 inhibitors than

- non-protein fractions, even in cooked seeds. **Nutrients** 9: 201. <https://doi.org/10.3390%2Fnu9030201>
- Lin X, Peng Z, Su C. 2015. Potential anticancer activities and mechanisms of costunolide and dehydrocostuslactone. **Int J Mol Sci** 16: 10888 - 10906. <https://doi.org/10.3390/ijms160510888>
- Lin J, Cai QY, Xu W, Lin JM, Peng J. 2018. Chemical composition, anticancer, anti-neuroinflammatory, and antioxidant activities of the essential oil of *Patrinia scabiosaefolia*. **Chin J Integr Med** 24: 207 - 212. <https://doi.org/10.1007/s11655-016-2459-4>
- Ling B, Xiao S, Yang J, Wei Y, Sakharkar MK, Yang J. 2019. Probing the antitumor mechanism of *Solanum nigrum* L. aqueous extract against human breast cancer MCF7 cells. **Bioengineering** 6: 112. <https://doi.org/10.3390%2Fbioengineering6040112>
- Liu B, Yang Y, Liu H, Xie Z, Li Q, Deng M, Li F, Peng J, Wu H. 2018a. Screening for cytotoxic chemical constituents from *Justicia procumbens* by HPLC-DAD-ESI-MS and NMR. **Chem Cent J** 12: 6. <https://doi.org/10.1186%2Fs13065-018-0371-z>
- Liu Y, Wang Q, Yang J, Guo X, Liu W, Ma S, Li S. 2018b. *Polygonum multiflorum* Thunb.: A review on chemical analysis, processing mechanism, quality evaluation, and hepatotoxicity. **Front Pharmacol** 9: 364. <https://doi.org/10.3389%2Ffphar.2018.00364>
- López-Meyer M, Nessler CL, McKnight TD. 1994. Sites of accumulation of the antitumor alkaloid camptothecin in *Camptotheca acuminata*. **Planta Med** 60: 558 - 560. <https://doi.org/10.1055/s-2006-959571>
- Lu C, Zhu L, Piao J, Jiang J. 2012. Chemical compositions extracted from *Wikstroemia indica* and their multiple activities. **Pharmaceut Biol** 50: 225 - 231. <https://doi.org/10.3109/13880209.2011.596207>
- Ma L, Qin C, Wang M, Gan D, Cao L, Ye H, Zeng X. 2013. Preparation, preliminary characterization and inhibitory effect on human colon cancer HT-29 cells of an acidic polysaccharide fraction from *Stachys floridana* Schuttl. ex Benth. **Food Chem Toxicol** 60: 269 - 276. <https://doi.org/10.1016/j.fct.2013.07.060>
- Magee PJ, Owusu-Apenten R, McCann MJ, Gill CI, Rowland IR. 2012. Chickpea (*Cicer arietinum*) and other plant-derived protease inhibitor concentrates inhibit breast and prostate cancer cell proliferation *in vitro*. **Nutr Cancer** 64: 741 - 748. <https://doi.org/10.1080/01635581.2012.688914>
- Mahata S, Maru S, Shukla S, Pandey A, Mugeshe G, Das BC, Bharti AC. 2012. Anticancer property of *Bryophyllum pinnata* (Lam) Oken. Leaves on human cervical cancer cells. **BMC Complement Altern Med** 12: 15. <https://doi.org/10.1186%2F1472-6882-12-15>
- Mahmood U, Kaul VK, Jirovetz L. 2002. Alkylated benzoquinones from *Iris kumaonensis*. **Phytochemistry** 61: 923 - 926. [https://doi.org/10.1016/s0031-9422\(02\)00474-0](https://doi.org/10.1016/s0031-9422(02)00474-0)
- Majdalawieh AF, Fayyad MW. 2016. Recent advances on the anti-cancer properties of *Nigella sativa*, a widely used food additive. **J Ayurveda Integr Med** 7: 173 - 180. <https://doi.org/10.1016%2Fj.jaim.2016.07.004>
- Mallick MN, Akhtar MS, Najm MZ, Tamboli ET, Ahmad S, Husain SA. 2015a. Evaluation of anticancer potential of *Bacopa monnieri* L. against MCF-7 and MDA-MB 231 cell line. **J Pharm Bioallied Sci** 7: 325 - 328. <https://doi.org/10.4103%2F0975-7406.168038>
- Mallick MN, Singh M, Parveen R, Khan W, Ahmad S, Zeeshan Najm M, Husain SA. 2015b. HPTLC Analysis of bioactivity guided anticancer enriched fraction of hydroalcoholic extract of *Picrorhiza kurroa*. **Biomed Res Int** 513875. <https://doi.org/10.1155/2015/513875>
- Maneerat W, Thain S, Cheenpracha S, Prawat U, Laphookhieo S. 2011. New amides from the seeds of *Clausana lansium*. **J Med Plants Res** 5: 2812 - 2815.
- Manosroi A, Sainakham M, Chankhampan C, Manosroi W, Manosroi J. 2016. *In vitro* anti-cancer activities of Job's tears (*Coix lachryma-jobi* Linn.) extracts on human colon adenocarcinoma. **Saudi J Biol Sci** 23: 248 - 256. <https://doi.org/10.1016%2Fj.sjbs.2015.03.008>
- Marcotullio MC, Curini M, Becerra JX. 2018. An ethnopharmacological, phytochemical and pharmacological review on lignans from Mexican *Bursera* spp. **Molecules** 23: 1976. <https://doi.org/10.3390%2Fmolecules23081976>
- Mathankumar M, Tamizhselvi R, Manickam V, Purohit G. 2015. Assessment of anticarcinogenic potential of *Vitex trifolia* and *Triticum aestivum* Linn by *in vitro* rat liver microsomal degranulation. **Toxicol Int** 22: 114 - 118. <https://doi.org/10.4103%2F0971-6580.172269>
- Mathibe LJ, Botha J, Naidoo S. 2016. Z-venusol, from *Gunnera perpensa*, induces apoptotic cell death in breast cancer cells *in vitro*. **South Afr J Bot** 102: 228 - 233. <https://doi.org/10.1016/j.sajb.2015.07.010>
- McGovern PE, Christofidou-Solomidou M, Wang W, Dukes F, Davidson T, El-Deiry WS. 2010. Anticancer

- activity of botanical compounds in ancient fermented beverages (review). **Int J Oncol** 37: 5 - 14.  
[https://doi.org/10.3892/ijo\\_00000647](https://doi.org/10.3892/ijo_00000647)
- Meena V, Baruah H, Parveen R. 2019. *Cassia auriculata*: A healing herb for all remedy. **J Pharmacogn Phytochem** 8: 4093 - 4097.
- Merina N, Chandra KJ, Jibon K. 2012. Medicinal plants with potential anticancer activity: A review. **Int Res J Pharm** 3: 26 - 30.
- Mimakia Y, Aokia T, Jitsunoa M, Yokosukaa A, Kiliçb CS, Coşkunb M. 2008. Steroidal saponins from the rhizomes of *Ruscus hypophyllum*. **Nat Prod Commun** 3: 1671 - 1678.
- Min BS, Gao JJ, Nakamura N, Kim YH, Hattori M. 2001. Cytotoxic alkaloids and a flavan from the bulbs of *Crinum asiaticum* var. japonicum. **Chem Pharm Bull** 49: 1217 - 1219.  
<https://doi.org/10.1248/cpb.49.1217>
- Mirmalek SA, Azizi MA, Jangholi E, Yadollah-Damavandi S, Javidi MA, Parsa Y, Parsa T, Salimi-Tabatabaee SA, Ghasemzadeh Kolagar H, Alizadeh-Navaei R. 2016. Cytotoxic and apoptogenic effect of hypericin, the bioactive component of *Hypericum perforatum* on the MCF-7 human breast cancer cell line. **Cancer Cell Int** 16: 3. <https://doi.org/10.1186%2Fs12935-016-0279-4>
- Mishra S, Aeri V, Gaur PK, Jachak SM. 2014. Phytochemical, therapeutic, and ethnopharmacological overview for a traditionally important herb: *Boerhavia diffusa* Linn. **BioMed Res Int** 808302.  
<https://doi.org/10.1155/2014/808302>
- Mithun PR, Xavier J, Reddy J, Praveen N. 2017. Production of camptothecin from *Nothapodytes nimmoniana*: An overview. **Int J Life Sci Scientif Res** 3: 1476 - 1483. <http://doi.org/10.21276/ijlssr.2017.3.6.9>
- Mitra SK, Prakash NS, Sundaram R. 2012. Shatavarins (containing Shatavarin IV) with anticancer activity from the roots of *Asparagus racemosus*. **Ind J Pharmacol** 44: 732 - 736.  
<https://doi.org/10.4103%2F0253-7613.103273>
- Moga MA, Balan A, Anastasiu CV, Dimienescu OG, Neculoiu CD, Gavriş C. 2018. An overview on the anticancer activity of *Azadirachta indica* (Neem) in gynecological cancers. **Int J Mol Sci** 19: 3898.  
<https://doi.org/10.3390%2Fijms19123898>
- Monika, Singh J. 2015. Plants and phytochemicals as potential source of anticancer agents. **Inte J Adv Res** 3: 307 - 317.
- Montopoli M, Bertin R, Chen Z, Bolcato J, Caparrotta L, Froidi G. 2012. *Croton lechleri* sap and isolated alkaloid taspine exhibit inhibition against human melanoma SK23 and colon cancer HT29 cell lines. **J Ethnopharmacol** 144:747 - 753. <http://doi.org/10.1016/j.jep.2012.10.032>
- Moon MK, Han YM, Lee YJ, Lee LH, Yang JH, Kwon BM, Kim DK. 2010. Inhibitory activities of anthraquinones from *Rubia akane* on phosphatase regenerating liver-3. **Arch Pharm Res** 33: 1747 - 1751.  
<https://doi.org/10.1007/s12272-010-1106-4>
- Morán-Santibañez K, Vasquez AH, Varela-Ramirez A, Henderson V, Sweeney J, Otero-Marah V, Fenelon K, Skouta R. 2019. *Larrea tridentata* extract mitigates oxidative stress-induced cytotoxicity in human neuroblastoma SH-SY5Y cells. **Antioxidants** 8: 427. <https://doi.org/10.3390%2Fantiox8100427>
- Mothana RA, Grünert R, Lindequist U, Bednarski PJ. 2007. Study of the anticancer potential of Yemeni plants used in folk medicine. **Pharmazie** 62: 305 - 307. <https://doi.org/10.1691/ph.2007.4.6696>
- Motta L, Furlan C, Santos D, Salatino M, Duarte-Almeida J, Negri G, Carvalho J, Ruiz A, Cordeiro I, Salatino A. 2011. Constituents and antiproliferative activity of extracts from leaves of *Croton macrobotrys*. **Rev Bras Farmacogn** 21: 972 - 977. <https://doi.org/10.1590/S0102-695X2011005000174>
- Mousa AM, El-Sammad NM, Abdel-Halim AH, Anwar N, Khalil WKB, Nawwar M, Hashim AN, Elsayed EA, Hassan SK. 2019. *Lagerstroemia speciosa* (L.) Pers leaves extract attenuates lung tumorigenesis via alleviating oxidative stress, inflammation and apoptosis. **Biomolecules** 9: 871.  
<https://doi.org/10.3390/biom9120871>
- Mukhija M, Singh MP, Dhar KL, Kalia AN. 2015. Cytotoxic and antioxidant activity of *Zanthoxylum alatum* stem bark and its flavonoid constituents. **J Pharm Phytochem** 4: 86.
- Nagata T, Win N, Xiao Long L, Miwa T, Okumura T, Fushimi H, Morita H, Shimada Y. 2016. Anti-cancer effect of *Saxifraga stolonifera* Meerb. **Clin Exp Pharmacol** 6: 211. <https://doi.org/10.4172/2161-1459.1000211>
- Nair PK, Melnick SJ, Wnuk SF, Rapp M, Escalon E, Ramachandran C. 2009. Isolation and characterization of an anticancer catechol compound from *Semecarpus anacardium*. **J Ethnopharmacol** 122: 450 - 456.



<https://doi.org/10.1016/j.jep.2009.02.001>

- Nakahata AM, Mayer B, Rie C, de Paula CA, Karow M, Neth P, Sampaio MU, Jochum M, Oliva MLV. 2011. The effects of a plant proteinase inhibitor from *Enterolobium contortisiliquum* on human tumor cell lines. **Biol Chem** 392: 327 - 336. <https://doi.org/10.1515/bc.2011.031>
- Nazmi SA, Nourazarian A, Bahhaj R, Khakikhatibi F. 2018. The anticancer effect of *Arctium lappa* and *Glycyrrhiza glabra* on HT-29 colon cancer and MCF-7 breast cancer cell lines. **Crescent J Medical Biol Sci** 5: 133 - 137.
- Ncube B, Ndhlala AR, Okem A, Van Staden J. 2013. Hypoxis (Hypoxidaceae) in African traditional medicine. **J Ethnopharmacol** 150: 818 - 827. <https://doi.org/10.1016/j.jep.2013.10.032>
- Neto CC, Amoroso JW, Liberty AM. 2008. Anticancer activities of cranberry phytochemicals: an update. **Mol Nutr Food Res** 52: 18 - 27. <https://doi.org/10.1002/mnfr.200700433>
- Ng TB, Lam YW, Wang H. 2003. Calcaelin, a new protein with translation-inhibiting, antiproliferative and antimitogenic activities from the mosaic puffball mushroom *Calvatia caelata*. **Planta Med** 69: 212 - 217. <https://doi.org/10.1055/s-2003-38492>
- Nho KJ, Chun JM, Lee AY, Kim HK. 2015. Anti-metastatic effects of *Rheum palmatum* L. extract in human MDA-MB-231 breast cancer cells. **Environ Toxicol Pharmacol** 40: 30 - 38. <https://doi.org/10.1016/j.etap.2015.05.006>
- Nono EC, Mkounga P, Kuete V, Marat K, Hultin PG, Nkengfack AE. 2010. Pycnanthulignenes A-D, antimicrobial cyclolignene derivatives from the roots of *Pycnanthus angolensis*. **J Nat Prod** 73: 213 - 216. <https://doi.org/10.1021/np9007393>
- Norikura T, Kojima-Yuasa A, Shimizu M, Huang X, Xu S, Kametani S, Rho S, Kennedy D, Matsui-Yuasa I. 2008. Anticancer activities and mechanisms of *Blumea balsamifera* extract in hepatocellular carcinoma cells. **Am J Chin Med** 36: 411 - 424. <https://doi.org/10.1142/S0192415X08005862>
- Ogbourne SM, Suhrbier A, Jones B, Cozzi SJ, Boyle GM, Morris M, McAlpine D, Johns J, Scott TM, Sutherland KP, Gardner JM, Le TT, Lenarczyk A, Aylward JH, Parsons PG. 2004. Antitumor activity of 3-ingenyl angelate: plasma membrane and mitochondrial disruption and necrotic cell death. **Cancer Res** 64: 2833 - 2839. <https://doi.org/10.1158/0008-5472.can-03-2837>
- Ogunwande IA, Walker TM, Bansal A, Setzer WN, Essien EE. 2010. Essential oil constituents and biological activities of *Peristrophe bicalyculata* and *Borreria verticillata*. **Nat Prod Commun** 5: 1815 - 1828.
- Oh J, Rho HS, Yang Y, Yoon JY, Lee J, Hong YD, Kim HC, Choi SS, Kim TW, Shin SS, Cho JY. 2013. Extracellular signal-regulated kinase is a direct target of the anti-inflammatory compound amentoflavone derived from *Torreya nucifera*. **Mediators Inflamm** 761506. <https://doi.org/10.1155/2013/761506>
- Ohyama K, Akaike T, Hirobe C, Yamakawa T. 2003. Cytotoxicity and apoptotic inducibility of *Vitex agnus-castus* fruit extract in cultured human normal and cancer cells and effect on growth. **Biol Pharm Bull** 26: 10 - 18. <https://doi.org/10.1248/bpb.26.10>
- Ombra MN, d'Acerno A, Nazzaro F, Riccardi R, Spigno P, Zaccardelli M, Pane C, Maione M, Fratianni F. 2016. Phenolic composition and antioxidant and antiproliferative activities of the extracts of twelve common bean (*Phaseolus vulgaris* L.) endemic ecotypes of Southern Italy before and after Cooking. **Oxid Med Cell Longev** 1398298. <https://doi.org/10.1155%2F2016%2F1398298>
- Ong SKL, Shanmugam MK, Fan L, Fraser SE, Arfuso F, Ahn KS, Sethi G, Bishayee A. 2019. Focus on formononetin: Anticancer potential and molecular targets. **Cancers** 11: 611. <https://doi.org/10.3390%2Fcancers11050611>
- Ooko E, Kadioglu O, Greten HJ, Efferth T. 2017. Pharmacogenomic characterization and isobologram analysis of the combination of ascorbic acid and curcumin-two main metabolites of *Curcuma longa*-in cancer cells. **Front Pharmacol** 8: 38. <https://doi.org/10.3389/fphar.2017.00038>
- Osman NHA, Said UZ, El-Waseef AM, Ahmed ESA. 2015. Luteolin supplementation adjacent to aspirin treatment reduced dimethyl hydrazine-induced experimental colon carcinogenesis in rats. **Tumour Biol** 36: 1179 - 1190. <https://doi.org/10.1007/s13277-014-2678-2>
- Öztürk B, Kocaoğlu EH, Durak ZE. 2015. Effects of aqueous extract from *Silybum marianum* on adenosine deaminase activity in cancerous and noncancerous human gastric and colon tissues. **Pharmacogn Mag** 11: 143 - 146. <https://doi.org/10.4103%2F0973-1296.149729>
- Pal D, Mishra P, Sachan N, Ghosh AK. 2011. Biological activities and medicinal properties of *Cajanus cajan* (L)

- Mills J. **Adv Pharm Technol Res** 2: 207 - 214. <https://doi.org/10.4103%2F2231-4040.90874>
- Palmieri A, Scapoli L, Iapichino A, Mercolini L, Mandrone M, Poli F, Gianni AB, Baserga C, Martinelli M. 2019. Berberine and *Tinospora cordifolia* exert a potential anticancer effect on colon cancer cells by acting on specific pathways. **Int J Immunopathol Pharmacol** 33: 1 - 10. <https://doi.org/10.1177%2F2058738419855567>
- Panda SK, Padhi L, Leyssen P, Liu M, Neyts J, Luyten W. 2017. Antimicrobial, anthelmintic, and antiviral activity of plants traditionally used for treating infectious disease in the Similipal Biosphere Reserve, Odisha, India. **Front Pharmacol** 8: 658. <https://doi.org/10.3389%2Ffphar.2017.00658>
- Pang SQ, Wang GQ, Lin JS, Diao Y, Xu RA. 2014a. Cytotoxic activity of the alkaloids from *Broussonetia papyrifera* fruits. **Pharm Biol** 52: 1315 - 1319. <https://doi.org/10.3109/13880209.2014.891139>
- Pang Y, Wang D, Fan Z, Chen X, Yu F, Hu X, Wang K, Yuan L. 2014b. *Blumea balsamifera*-A phytochemical and pharmacological review. **Molecules** 19: 9453 - 9477. <https://doi.org/10.3390/molecules19079453>
- Park M, Cheon MS, Kim SH, Chun JM, Lee AY, Moon BC, Yoon T, Choo BK, Kim HK. 2011. Anticancer activity of *Asparagus cochinchinensis* extract and fractions in HepG2 cells. **J Korean Soc Appl Biol Chem** 54: 188 - 193. <https://doi.org/10.3839/jksabc.2011.031>
- Park GH, Park JH, Song HM, Eo HJ, Kim MK, Lee JW, Lee MH, Cho KH, Lee JR, Cho HJ, Jeong JB. 2014. Anti-cancer activity of Ginger (*Zingiber officinale*) leaves through the expression of activating transcription factor 3 in human colorectal cancer cells. **BMC Complement Altern Med** 14: 408. <https://doi.org/10.1186%2F1472-6882-14-408>
- Park KI, Park H, Nagappan A, Hong GE, Yumnam S, Lee HJ, Kim EH, Lee WS, Shin SC, Kim JA, Lee SJ, Ma JY, Min T, Heo JD, Kim GS. 2017. Polyphenolic compounds from Korean *Lonicera japonica* Thunb. induces apoptosis via AKT and caspase cascade activation in A549 cells. **Oncol Lett** 13: 2521 - 2530. <https://doi.org/10.3892%2Fol.2017.5771>
- Peng B, Hu Q, Liu X, Wang L, Chang Q, Li J, Tang J, Wang N, Wang Y. 2009. Duchesnea phenolic fraction inhibits *in vitro* and *in vivo* growth of cervical cancer through induction of apoptosis and cell cycle arrest. **Exp Biol Med** 234: 74 - 83. <https://doi.org/10.3181/0806-rm-204>
- Pilarski R, Filip B, Wietrzyk J, Kuraś M, Gulewicz K. 2010. Anticancer activity of the *Uncaria tomentosa* (Willd.) DC. preparations with different oxindole alkaloid composition. **Phytomedicine** 17: 1133 - 1139. <https://doi.org/10.1016/j.phymed.2010.04.013>
- Pintha K, Yodkeeree S, Pitchakarn P, Limtrakul P. 2014. Anti-invasive activity against cancer cells of phytochemicals in red jasmine rice (*Oryza sativa* L.). **Asian Pac J Cancer Prev** 15: 4601 - 4607. <https://doi.org/10.7314/apjcp.2014.15.11.4601>
- Pires TC, Dias MI, Calhelha RC, Carvalho AM, Queiroz MJ, Barros L, Ferreira IC. 2015. Bioactive properties of *Tabebuia impetiginosa*-based phytopreparations and phytoformulations: A comparison between extracts and dietary supplements. **Molecules** 20: 22863 - 22871. <https://doi.org/10.3390%2Fmolecules201219885>
- Powrie AH. 1975. The chemical constituents of *Knowltonia capensis*. Thesis, University of Cape Town, South Africa. <http://hdl.handle.net/11427/12326>
- Pradheepkumar CP, Shanmugam G. 1999. Anticancer potential of cleistanthin A isolated from the tropical plant *Cleistanthus collinus*. **Oncol Res** 11: 225 - 232.
- Prakash O, Kumar A, Kumar P, Ajeet. 2013. Anticancer potential of plants and natural products: A review. **Am J Pharmacol Sci** 1: 104 - 115. <https://doi.org/10.12691/AJPS-1-6-1>
- Prasad SK, Singh MK. 2015. Horse gram- an underutilized nutraceutical pulse crop: a review. **J Food Sci Technol** 52: 2489 - 2499. <https://doi.org/10.1007%2Fs13197-014-1312-z>
- Pratama F, Rizki M, Suratno S, Mulyani E. 2018. Antibacterial activity of akar kuning (*arcangelisia flava*) secondary metabolites: molecular docking approach. **Asian J Pharm Clin Res** 11: 447 - 451. <https://doi.org/10.22159/ajpcr.2018.v11i11.29189>
- Pratheeshkumar P, Kuttan G. 2011. Vernolide-A, a sesquiterpene lactone from *Vernonia cinerea*, induces apoptosis in B16F-10 melanoma cells by modulating p53 and caspase-3 gene expressions and regulating NF-κB-mediated bcl-2 activation. **Drug Chem Toxicol** 34: 261 - 270. <https://doi.org/10.3109/01480545.2010.520017>
- Prema G, Chitra M, Kanagasabai R. 2019. Studies on antimicrobial activity of *Ziziphus rugosa* Lam. pericarp. **Int J Pharm Sci Res** 10: 4942 - 4948. [https://doi.org/10.13040/IJPSR.0975-8232.10\(11\).4942-48](https://doi.org/10.13040/IJPSR.0975-8232.10(11).4942-48)

- Privitera G, Luca T, Castorina S, Passanisi R, Ruberto G, Napoli E. 2019. Anticancer activity of *Salvia officinalis* essential oil and its principal constituents against hormone-dependent tumour cells. **Asian Pac J Trop Biomed** 9: 24 - 28. <https://doi.org/10.4103/2221-1691.250266>
- Qadir M, Dangroo NA, Shah SWA. 2019. Bioactivity-guided phytochemical investigations of *Artemisia maritima*: isolation and characterization of chemical constituents. **Asian J Pharm Clin Res** 12: 269 - 274. <https://doi.org/10.22159/ajpcr.2019.v12i1.28600>
- Radhika M, Ghoshal N, Chatterjee A. 2012. Comparison of effectiveness in antitumor activity between flavonoids and polyphenols of the methanolic extract of roots of *Potentilla fulgens* in breast cancer cells. **J Complement Integr Med** 9: 24. <https://doi.org/10.1515/1553-3840.1644>
- Ray SD, Dewanjee S. 2015. Isolation of a new triterpene derivative and *in vitro* and *in vivo* anticancer activity of ethanolic extract from root bark of *Zizyphus nummularia* Aubrev. **Nat Prod Res** 29: 1529 - 1536. <https://doi.org/10.1080/14786419.2014.983921>
- Renukadevi KP, Sultana SS. 2011. Determination of antibacterial, antioxidant and cytotoxicity effect of *Indigofera tinctoria* on lung cancer cell line NCI-h69. **Int J Pharmacol** 7: 356 - 362. <http://doi.org/10.3923/ijp.2011.356.362>
- Restrepo DA, Saenz E, Jara-Muñoz OA, Calixto-Botía IF, Rodríguez-Suárez S, Zuleta P, Chavez BG, Sanchez JA, D'Auria JC. 2019. Erythroxyllum in focus: An interdisciplinary review of an overlooked genus. **Molecules** 24: 3788. <https://doi.org/10.3390%2Fmolecules24203788>
- Rice S, Amon A, Whitehead SA. 2007. Ethanolic extracts of black cohosh (*Actaea racemosa*) inhibit growth and oestradiol synthesis from oestrone sulphate in breast cancer cells. **Maturitas** 56: 359 - 367. <https://doi.org/10.1016/j.maturitas.2006.10.002>
- Robinson A, Kumar TV, Sreedhar E, Naidu VG, Krishna SR, Babu KS, Srinivas PV, Rao JM. 2008. A new sesquiterpene lactone from the roots of *Saussurea lappa*: structure-anticancer activity study. **Bioorg Med Chem Lett** 18: 4015 - 4017. <https://doi.org/10.1016/j.bmcl.2008.06.008>
- Rosangkima G, Prasad SB. 2004. Antitumour activity of some plants from Meghalaya and Mizoram against murine ascites Dalton's lymphoma. **Ind J Exp Biol** 42: 981 - 988.
- Rungruangmaitree R, Jiraungkoorskul W. 2017. Pea, *Pisum sativum*, and its anticancer activity. **Pharmacogn Rev** 11: 39 - 42. [https://doi.org/10.4103%2Fphrev.phrev\\_57\\_16](https://doi.org/10.4103%2Fphrev.phrev_57_16)
- Rzeski W, Stepulak A, Szymański M, Sifringer M, Kaczor J, Wejksza K, Zdzisińska B, Kandefier-Szerszeń M. 2006. Betulinic acid decreases expression of bcl-2 and cyclin D1, inhibits proliferation, migration and induces apoptosis in cancer cells. **Naunyn Schmiedebergs Arch Pharmacol** 374: 11 - 20. <https://doi.org/10.1007/s00210-006-0090-1>
- Safia, Kamil M, Jadiya P, Sheikh S, Haque E, Nazir A, Lakshmi V, Mir SS. 2015. The chromone alkaloid, rohitukine, affords anti-cancer activity via modulating apoptosis pathways in A549 cell line and yeast mitogen activated protein kinase (MAPK) pathway. **Plos One** 10: e0137991. <https://doi.org/10.1371%2Fjournal.pone.0137991>
- Sahreen S, Khan MR, Khan RA, Shah NA. 2013. Estimation of flavonoids, antimicrobial, antitumor and anticancer activity of *Carissa opaca* fruits. **BMC Compl Alter Med** 13: 372. <https://doi.org/10.1186/1472-6882-13-372>
- Saibu GM, Katerere DR, Rees DJ, Meyer M. 2015. *In vitro* cytotoxic and pro-apoptotic effects of water extracts of *Tulbaghia violacea* leaves and bulbs. **J Ethnopharmacol** 164: 203 - 209. <https://doi.org/10.1016/j.jep.2015.01.040>
- Sakarkar DM, Deshmukh VN. 2011. Ethnopharmacological review of traditional medicinal plants for anti-cancer activity. **Int J Pharm Technol Res** 3: 298 - 308.
- Samarghandian S, Hadjzadeh MA, Afshari JT, Hosseini M. 2014. Antiproliferative activity and induction of apoptotic by ethanolic extract of *Alpinia galanga* rhizome in human breast carcinoma cell line. **BMC Complement Altern Med** 14: 192. <https://doi.org/10.1186/1472-6882-14-192>
- Samuel P, Kumar VJ, Dhayalan DR, Amirtharaj K, Sudarmani DNP. 2017. Bioprospecting of *Salicornia europaea* L. a marine halophyte and evaluation of its biological potential with special reference to anticancer activity. **J Pharma Pharma Sci** 2: 138. <http://doi.org/10.29011/2574-7711/100038>
- Sandoval TA, Urueña CP, Llano M, Gómez-Cadena A, Hernández JF, Sequeda LG, Loaiza AE, Barreto A, Li S, Fiorentino S. 2016. Standardized extract from *Caesalpinia spinosa* is cytotoxic over cancer stem cells and

- enhance anticancer activity of doxorubicin. **Am J Chin Med** 44: 1693 - 1717.  
<https://doi.org/10.1142/s0192415x16500956>
- Sarno F, Pepe G, Termolino P, Carafa V, Massaro C, Merciai F, Campiglia P, Nebbioso A, Altucci L. 2020. *Trifolium repens* blocks proliferation in chronic myelogenous leukemia via the BCR-ABL/STAT5 pathway. **Cells** 9: 379. <https://doi.org/10.3390%2Fcells9020379>
- Satheesh LS, Murugan K. 2011. Antimicrobial activity of protease inhibitor from leaves of *Coccinia grandis* (L.) Voigt. **Indian J Exp Biol** 49: 366 - 374.
- Shaikh R, Pund M, Dawane A, Iliyas S. 2014. Evaluation of anticancer, antioxidant, and possible anti-inflammatory properties of selected medicinal plants used in indian traditional medication. **J Tradit Complement Med** 4: 253 - 257. <https://doi.org/10.4103%2F2225-4110.128904>
- Shalabi M, Khilo K, Zakaria M, Elsebaei M, Abdo W, Awadin W. 2015. Anticancer activity of *Aloe vera* and *Calligonum comosum* extracts separately on hepatocellular carcinoma cells. **Asia Pac J Trop Biomed** 5: 375 - 381. [https://doi.org/10.1016/S2221-1691\(15\)30372-5](https://doi.org/10.1016/S2221-1691(15)30372-5)
- Shang W, Qiao J, Gu C, Yin W, Du J, Wang W, Zhu M, Han M, Lu W. 2011. Anticancer activity of an extract from needles and twigs of *Taxus cuspidata* and its synergistic effect as a cocktail with 5-fluorouracil. **BMC Complement Altern Med** 11: 123. <https://doi.org/10.1186/1472-6882-11-123>
- Sharma H, Parihar L, Parihar P. 2011. Review on cancer and anticancerous properties of some medicinal plants. **J Med Plant Res** 5: 1818 - 1835.
- Sharma N, Sharma A, Bhatia G, Landi M, Brestic M, Singh B, Singh J, Kaur S, Bhardwaj R. 2019. Isolation of phytochemicals from *Bauhinia variegata* L. bark and their *in vitro* antioxidant and cytotoxic potential. **Antioxidants** 8: 492. <https://doi.org/10.3390/antiox8100492>
- She T, Qu L, Wang L, Yang X, Xu S, Feng J, Gao Y, Zhao C, Han Y, Cai S, Shou C. 2015. Sarsaparilla (*Smilax Glabra* Rhizome) extract inhibits cancer cell growth by S phase arrest, apoptosis, and autophagy via redox-dependent ERK1/2 pathway. **Cancer Prev Res** 8: 464 - 474.  
<https://doi.org/10.1158/1940-6207.capr-14-0372>
- Shebaby WN, Mroueh M, Bodman-Smith K, Mansour A, Taleb RI, Daher CF, El-Sibai M. 2014. *Daucus carota* pentane-based fractions arrest the cell cycle and increase apoptosis in MDA-MB-231 breast cancer cells. **BMC Complement Altern Med** 14: 387. <https://doi.org/10.1186%2F1472-6882-14-387>
- Shendge AK, Basu T, Chaudhuri D, Panja S, Mandal N. 2017. *In vitro* antioxidant and antiproliferative activities of various solvent fractions from *Clerodendrum viscosum* leaves. **Pharmacogn Mag** 13: 344 - 353.  
[https://doi.org/10.4103%2Fpm.pm\\_395\\_16](https://doi.org/10.4103%2Fpm.pm_395_16)
- Sheng L, Yang Y, Zhang Y, Li N. 2019. Chemical constituents of *Patrinia heterophylla* Bunge and selective cytotoxicity against six human tumor cells. **J Ethnopharmacol** 236: 129 - 135.  
<https://doi.org/10.1016/j.jep.2019.03.005>
- Shenouda NS, Sakla MS, Newton LG, Besch-Williford C, Greenberg NM, MacDonald RS, Lubahn DB. 2007. Phytosterol *Pygeum africanum* regulates prostate cancer *in vitro* and *in vivo*. **Endocrine** 31: 72 - 81.  
<https://doi.org/10.1007/s12020-007-0014-y>
- Shi G, Liu J, Zhao W, Liu Y, Tian X. 2016. Separation and purification and *in vitro* anti-proliferative activity of leukemia cell K562 of *Galium aparine* L. petroleum ether phase. **Saudi Pharm J** 24: 241 - 244.  
<https://doi.org/10.1016%2Fj.jsps.2016.04.005>
- Shibata S, Nishikawa Y, Takeda T, Tanaka M, Fukuoka F. 1968. Studies on the chemical structures of the new glucans isolated from *Gyrophora esculenta* Miyoshi and *Lasallia papulosa* (Ach.) Llano and their inhibiting effect on implanted sarcoma 180 in mice. **Chem Pharm Bull** 16: 1639 - 1641.  
<https://doi.org/10.1248/cpb.16.1639>
- Shin Y, Lee Y. 2013. Cytotoxic activity from *Curcuma zedoaria* through mitochondrial activation on ovarian cancer cells. **Toxicol Res** 29: 257 - 261. <https://doi.org/10.5487%2FTR.2013.29.4.257>
- Shoeb M, Celik S, Jaspars M, Kumarasamy Y, MacManus S, Nahar L, Thoo-Lin P, Sarker S. 2005. Isolation, structure elucidation and bioactivity of schischkiniin, a unique indole alkaloid from the seeds of *Centaurea schischkini*. **Tetrahedron** 61: 9001 - 9006. <https://doi.org/10.1016/j.tet.2005.07.047>
- Shoeb M, MacManus, S, Jaspars, M, Trevidu, J, Nahar, L, Kong-Thoo-Lin, P, Sarker, S. 2006. Montamine, a unique dimeric indole alkaloid, from the seeds of *Centaurea montana* (Asteraceae), and its *in vitro* cytotoxic activity against the CaCo2 colon cancer cells. **Tetrahedron** 62: 11172 - 11177.

<https://doi.org/10.1016/j.tet.2006.09.020>

- Shoemaker M, Hamilton B, Dairkee SH, Cohen I, Campbell MJ. 2005. *In vitro* anticancer activity of twelve Chinese medicinal herbs. **Phytother Res** 19: 649 - 651. <https://doi.org/10.1002/ptr.1702>
- Siegel RL, Miller KD, Jemal A. 2018. Cancer statistics, 2018. **CA Cancer J Clin** 68: 7 - 30. <https://doi.org/10.3322/caac.21442>
- Sigstedt SC, Hooten CJ, Callewaert MC, Jenkins AR, Romero AE, Pullin MJ, Kornienko A, Lowrey TK, Slambrouck SV, Steelant WF. 2008. Evaluation of aqueous extracts of *Taraxacum officinale* on growth and invasion of breast and prostate cancer cells. **Int J Oncol** 32: 1085 - 1090.
- Singh TD, Meitei HT, Sharma AL, Robinson A, Singh LS, Singh TR. 2015. Anticancer properties and enhancement of therapeutic potential of cisplatin by leaves extract of *Zanthoxylum armatum* DC. **Biol Res** 48: 46. <https://doi.org/10.1186%2Fs40659-015-0037-4>
- Sivalokanathan S, Vijayababu MR, Balasubramanian MP. 2006. Effects of *Terminalia arjuna* bark extract on apoptosis of human hepatoma cell line HepG2. **World J Gastroenterol** 12: 1018 - 1024. <https://doi.org/10.3748%2Fwjg.v12.i7.1018>
- Srikanth S, Chen Z. 2016. Plant protease inhibitors in therapeutics-focus on cancer therapy. **Front Pharmacol** <https://doi.org/10.3389/fphar.2016.00470>
- Srinivas K, Afolayan, AJ. 2007. Ethnobotanical information of medicinal plants used for treatment of cancer in the Eastern Cape Province, South Africa. **Curr Sci** 92: 906 - 908.
- Stapel J, Oppermann C, Richter DU, Ruth W, Briese V. 2015. Anti-carcinogenic effects of ethanolic extracts from root and shoot of *Lupinus angustifolius* on breast carcinoma cell lines MCF-7 and BT20. **J Med Plant Res** 9: 561 - 568. <https://doi.org/10.5897/JMPR2014.5392>
- Stipanovic RD, Puckhaber LS, Liu J, Bell AA. 2009. Total and percent atropisomers of gossypol and gossypol-6-methyl ether in seeds from pima cottons and accessions of *Gossypium barbadense* L. **J Agric Food Chem** 57: 566 - 571. <https://doi.org/10.1021/jf802756e>
- Subhadradevi V, Khairunissa K, Asokkumar K, Sivashanmugam MUA, Jagannath P. 2011. Induction of apoptosis and cytotoxic activities of *Apium graveolens* Linn. using *in vitro* models. **Middle East J Sci Res** 9: 90 - 94.
- Sugata M, Lin CY, Shih YC. 2015. Anti-inflammatory and anticancer activities of taiwanese purple-fleshed sweet potatoes (*Ipomoea batatas* L. Lam) extracts. **Biomed Res Int** <https://doi.org/10.1155/2015/768093>
- Sun J, Wang H, Ng TB. 2010. Trypsin isoinhibitors with antiproliferative activity toward leukemia cells from *Phaseolus vulgaris* cv "White Cloud Bean". **J Biomed Biotechnol** 219793. <https://doi.org/10.1155/2010/219793>
- Sun M, Cao H, Sun L, Dong S, Bian Y, Han J, Zhang L, Ren S, Hu Y, Liu C, Xu L, Liu P. 2012. Antitumor activities of kushen: literature review. **Evid Based Complement Alternat Med** 373219. <https://doi.org/10.1155%2F2012%2F373219>
- Sun Q, Liu K, Shen X, Jin W, Jiang L, Sheikh MS, Hu Y, Huang Y. 2014. Lappaol F, a novel anticancer agent isolated from plant *arctium Lappa* L. **Mol Cancer Ther** 13: 49 - 59. <https://doi.org/10.1158/1535-7163>
- Sun Y, Li J, Zhang Y, Tu Y, Huang C, Tao J, Yang M, Yang L. 2018. The polysaccharide extracted from *Umbilicaria esculenta* inhibits proliferation of melanoma cells through ROS-activated mitochondrial apoptosis pathway. **Biol Pharm Bull** 41: 57 - 64. <https://doi.org/10.1248/bpb.b17-00562>
- Suresh P, Xavier A. S, Karthik V. P, Punnagai K. 2019. Anticancer activity of *Cissus quadrangularis* L. methanolic extract against MG63 human osteosarcoma cells - an *in-vitro* evaluation using cytotoxicity assay. **Biomed Pharmacol J** 12 <https://doi.org/10.13005/bpj/1724>
- Tahergerabi Z, Abedini MR, Mitra M, Fard MH, Beydokhti H. 2015. "*Ziziphus jujuba*": A red fruit with promising anticancer activities. **Pharmacogn Rev** 9: 99 - 106. <https://doi.org/10.4103%2F0973-7847.162108>
- Tandon SF, Rastogi RP. 1976. Wikstromol, a new lignan from *Wikstroemia viridiflora*. **Phytochemistry** 15: 1789 - 1791. [https://doi.org/10.1016/S0031-9422\(00\)97493-4](https://doi.org/10.1016/S0031-9422(00)97493-4)
- Tang SW, Sukari MA, Neoh BK, Yeap YS, Abdul AB, Kifli N, Ee GC. 2014. Phytochemicals from *Kaempferia angustifolia* Rosc. and their cytotoxic and antimicrobial activities. **Biomed Res Int** 417674. <https://doi.org/10.1155/2014/417674>
- Tariq A, Sadia S, Pan K, Ullah I, Mussarat S, Sun F, Abiodun OO, Batbaatar A, Li Z, Song D, Xiong Q, Ullah R, Khan S, Basnet BB, Kumar B, Islam R, Adnan M. 2017. A systematic review on ethnomedicines of anti-cancer plants. **Phytother Res** 31: 202 - 264. <https://doi.org/10.1002/ptr.5751>

- Tascilar M, de Jong FA, Verweij J, Mathijssen RH. 2006. Complementary and alternative medicine during cancer treatment: beyond innocence. **Oncologist** 11: 732 - 741. <https://doi.org/10.1634/theoncologist.11-7-732>
- Telang N, Nair HB, Wong GYC. 2019. Growth inhibitory efficacy and anti-aromatase activity of *Tabebuia avellanedae* in a model for post-menopausal Luminal A breast cancer. **Biomed Rep** 11: 222 - 229. <https://doi.org/10.3892%2Fbr.2019.1244>
- Thi ND, Hwang ES. 2018. Anti-cancer and anti-inflammatory activities of aronia (*Aronia melanocarpa*) leaves. **Asian Pac J Trop Biomed** 8: 586 - 592.
- Ukiya M, Akihisa T, Tokuda H, Suzuki H, Mukainaka T, Ichiishi E, Yasukawa K, Kasahara Y, Nishino H. 2002. Constituents of Compositae plants III. Anti-tumor promoting effects and cytotoxic activity against human cancer cell lines of triterpene diols and triols from edible chrysanthemum flowers. **Cancer Lett** 177: 7 - 12. [https://doi.org/10.1016/s0304-3835\(01\)00769-8](https://doi.org/10.1016/s0304-3835(01)00769-8)
- Ulubelen A, Topçu G, Chai H, Pezzuto JM. 1999. Cytotoxic activity of diterpenoids isolated from *Salvia hypargeia*. **Pharm Biol** 37: 148 - 151. <https://doi.org/10.1076/phbi.37.2.148.6082>
- Veljkovic B, Djordjevic N, Dolicanin Z, Licina B, Topuzovic M, Stankovic M, Zlatic N, Djajic-stevanovic Z. 2018. Antioxidant and anticancer properties of leaves and fruit extracts of the wild Raspberry (*Rubus idaeus* L.). **Not Bot Horti Agrobot Cluj Napoca** 47: 359 - 367. <https://doi.org/10.15835/nbha47111274>
- Vetchinkina E, Shirokov A, Bucharskaya A, Navolokin N, Prilepskii A, Burov A, Maslyakova G, Nikitina VE. 2016. Antitumor activity of extracts from medicinal basidiomycetes mushrooms. **Int J Med Mushrooms** 18: 955 - 964. <https://doi.org/10.1615/intjmedmushrooms.v18.i11.10>
- Wabo HK, Kouam SF, Krohn K, Hussain H, Tala MF, Tane P, Ree Tv, Hu Q, Schulz B. 2007. Prenylated anthraquinones and other constituents from the seeds of *Vismia laurentii*. **Chem Pharm Bull** 55: 1640 - 1642. <https://doi.org/10.1248/cpb.55.1640>
- Wall ME, Wani MC. 1996. Camptothecin. Discovery to clinic. **Ann New York Acad Sci** 803: 1 - 12. <https://doi.org/10.1111/j.1749-6632.1996.tb26371.x>
- Wan G, Tao JG, Wang GD, Liu SP, Zhao HX, Liang QD. 2016. *In vitro* antitumor activity of the ethyl acetate extract of *Potentilla chinensis* in osteosarcoma cancer cells. **Mol Med Rep** 14: 3634 - 3640. <https://doi.org/10.3892%2Fmmr.2016.5679>
- Wang CZ, Xie JT, Zhang B, Ni M, Fishbein A, Aung HH, Mehendale SR, Du W, He TC, Yuan CS. 2007a. Chemopreventive effects of *Panax notoginseng* and its major constituents on SW480 human colorectal cancer cells. **Int J Oncol** 31: 1149 - 1156. <https://doi.org/10.3892/ijo.31.5.1149>
- Wang SY, Feng R, Bowman L, Lu Y, Ballington JR, Ding M. 2007b. Antioxidant activity of *Vaccinium stamineum*: exhibition of anticancer capability in human lung and leukemia cells. **Planta Med** 73: 451 - 460. <https://doi.org/10.1055/s-2007-967164>
- Wang CZ, Aung HH, Zhang B, Sun S, Li XL, He H, Xie JT, He TC, Du W, Yuan CS. 2008. Chemopreventive effects of heat-processed *Panax quinquefolius* root on human breast cancer cells. **Anticancer Res** 28: 2545 - 2551.
- Wang Y, Hong C, Zhou C, Xu D, Qu H. 2011. Screening antitumor compounds psoralen and isopsoralen from *Psoralea corylifolia* L. Seeds. **Evid Based Complement Alternat Med** 363052. <https://doi.org/10.1093/ecam/nen087>
- Wang CZ, Zhang Z, Wan JY, Zhang CF, Anderson S, He X, Yu C, He TC, Qi LW, Yuan CS. 2015. Protopanaxadiol, an active ginseng metabolite, significantly enhances the effects of fluorouracil on colon cancer. **Nutrients** 7: 799 - 814. <https://doi.org/10.3390%2Fnu7020799>
- Wang R, Xiao S, Niu Z. 2017. Anti-cancer activity of *Aster tataricus* on SCC-9 human oral squamous carcinoma. **Afr J Tradit Complement Altern Med** 4: 142 - 147. <https://doi.org/10.21010%2Fajtcam.v14i2.15>
- Wani MC, Taylor HL, Wall ME, Coggon P, McPhail AT. 1971. Plant antitumor agents.VI. The isolation and structure of taxol, a novel antileukemic and antitumor agent from *Taxus brevifolia*. **J Am Chem Soc** 93: 2325 - 2327. <https://doi.org/10.1021/ja00738a045>
- Wee HN, Neo SY, Singh D, Yew HC, Qiu ZY, Tsai XC, How SY, Yip KC, Tan CH, Koh HL. 2020. Effects of *Vitex trifolia* L. leaves extracts and phytoconstituents on cytokine production in human U937 macrophages. **BMC Complement Med Ther** 20: 91. <https://doi.org/10.1186%2Fs12906-020-02884-w>
- William CSC, Kwok LN. 2007. *In vitro* and *in vivo* anti-tumor effects of *Astragalus membranaceus*. **Cancer Lett** 252: 43 - 54. <https://doi.org/10.1016/j.canlet.2006.12.001>

- Wong FC, Woo CC, Hsu A, Tan BK. 2013. The anti-cancer activities of *Vernonia amygdalina* extract in human breast cancer cell lines are mediated through caspase-dependent and p53-independent pathways. **Plos One** 8: e78021. <https://doi.org/10.1371%2Fjournal.pone.0078021>
- WHO. 2018. (World Health Organization). **Cancer key factor**. <https://www.who.int/news-room/fact-sheets/detail/cancer>
- Wu PL, Lin SB, Huang CP, Chiou RY. 2002. Antioxidative and cytotoxic compounds extracted from the sap of *Rhus succedanea*. **J Nat Prod** 65: 1719 - 1721. <https://doi.org/10.1021/np0201467>
- Wu CY, Ke Y, Zeng YF, Zhang YW, Yu HJ. 2017. Anticancer activity of *Astragalus* polysaccharide in human non-small cell lung cancer cells. **Cancer Cell Int** 17: 115. <https://doi.org/10.1186%2Fs12935-017-0487-6>
- Wu X, Li Q, Feng Y, Ji Q. 2018. Antitumor research of the active ingredients from Traditional Chinese Medical Plant *Polygonum Cuspidatum*. **Evid Based Complement Alternat Med** 2313021. <https://doi.org/10.1155/2018/2313021>
- Xia EQ, Wang BW, Xu XR, Zhu L, Song Y, Li HB. 2011. Microwave-assisted extraction of oleanolic acid and ursolic acid from *Ligustrum lucidum* Ait. **Int J Mol Sci** 12: 5319 - 5329. <https://doi.org/10.3390/ijms12085319>
- Xiang B, Yu X, Li B, Xiong Y, Long M, He Q. 2019. Characterization, antioxidant, and anticancer activities of a neutral polysaccharide from *Duchesnea indica* (Andr.) Focke. **J Food Biochem** 43: e12899. <https://doi.org/10.1111/jfbc.12899>
- Xu W, Liu J, Li C, Wu HZ, Liu YW. 2008. Kaempferol-7-O-beta-D-glucoside (KG) isolated from *Smilax china* L. rhizome induces G2/M phase arrest and apoptosis on HeLa cells in a p53-independent manner. **Cancer Lett** 264: 229 - 240. <https://doi.org/10.1016/j.canlet.2008.01.044>
- Yadav B, Bajaj A, Saxena M, Saxena AK. 2010. *In vitro* anticancer activity of the root, stem and leaves of *Withania Somnifera* against various human cancer cell lines. **Ind J Pharm Sci** 72: 659 - 663. <https://doi.org/10.4103%2F0250-474X.78543>
- Yang SF, Chu SC, Liu SJ, Chen YC, Chang YZ, Hsieh YS. 2007. Antimetastatic activities of *Selaginella tamariscina* (Beauv.) on lung cancer cells *in vitro* and *in vivo*. **J Ethnopharmacol** 110: 483 - 489. <https://doi.org/10.1016/j.jep.2006.10.010>
- Yong YL, Tan LT, Ming LC, Chan KG, Lee LH, Goh BH, Khan TM. 2017. The effectiveness and safety of topical capsaicin in postherpetic neuralgia: a systematic review and meta-analysis. **Front Pharm** <https://doi.org/10.3389/fphar.2016.00538>
- Yu PZ, Wang LP, Chen ZN. 1991. A new podophyllotoxin-type lignan from *Dyosma versipellis* var tomentosa. **J Nat Prod** 54: 1422 - 1424.
- Yu J, Xian Y, Li G, Wang D, Zhou H, Wang X. 2017a. One new flavanocoumarin from the thorns of *Gleditsia sinensis*. **Nat Prod Res** 31: 275 - 280. <https://doi.org/10.1080/14786419.2016.1233406>
- Yu S, Sheu HM, Lee CH. 2017b. *Solanum incanum* extract (SR-T100) induces melanoma cell apoptosis and inhibits established lung metastasis. **Oncotarget** 8: 103509 - 103517. <https://doi.org/10.18632/oncotarget.21508>
- Yuan XL, Mao XX, Du YM, Yan PZ, Hou XD, Zhang ZF. 2019. Anti-tumor activity of cembranoid-type diterpenes isolated from *Nicotiana tabacum* L. **Biomolecules** 9: 45. <https://doi.org/10.3390%2Fbiom9020045>
- Zalke AS, Kulkarni AV, Shirode DS, Duraiswamy B. 2010. *In-vivo* anticancer activity of *Clerodendrum serratum* (L) Moon. **Res J Pharm Biol Chem Sci** 1: 89 - 98.
- Zhai X, Lenon G, Xue CCL, Li C. 2016. *Euonymus alatus*: A review on its phytochemistry and antidiabetic activity. **Evid Based Complement Alternat Med** 1 - 12. <https://doi.org/10.1155/2016/9425714>
- Zhang H, Wang X, Chen F, Androulakis XM, Wargovich MJ. 2007. Anticancer activity of limonoid from *Khaya senegalensis*. **Phytother Res** 21: 731 - 734. <https://doi.org/10.1002/ptr.2148>
- Zhang D, Li K, Sun C, Cao G, Qi Y, Lin Z, Guo Y, Liu Z, Chen Y, Liu J, Cheng G, Wang P, Zhang L, Zhang J, Wen J, Xu D, Kong F, Zhao S. 2018. Anti-cancer effects of *Paris polyphylla* ethanol extract by inducing cancer cell apoptosis and cycle arrest in prostate cancer cells. **Curr Urol** 11: 144 - 150. <https://doi.org/10.1159/000447209>
- Zhang XL, Wang BB, Mo JS. 2018. Puerarin 6''-O-xyloside possesses significant antitumor activities on colon cancer through inducing apoptosis. **Oncol Lett** 16: 5557 - 5564. <https://doi.org/10.3892/ol.2018.9364>

- Zhang Y, Zhang Y, Xu H. 2019. Effect of *Codonopsis pilosula* polysaccharides on the growth and motility of hepatocellular carcinoma HepG2 cells by regulating  $\beta$ -Catenin/TCF4 pathway. **Int J Polym Sci** 1 - 7.  
<https://doi.org/10.1155/2019/7068437>
- Zhao Y, Wang CM, Wang BG, Zhang CX. 2005. Study on the anticancer activities of the *Clematis manshrica* saponins *in vivo*. **China J Chin Mater Med** 30: 1452 - 1453.
- Zhao L, Li C, Zhang Y, Wen Q, Ren D. 2014. Phytochemical and biological activities of an anticancer plant medicine: *Brucea javanica*. **Anticancer Agents Med Chem** 14: 440 - 458.  
<https://doi.org/10.2174/18715206113136660336>
- Zhao Q, Huo XC, Sun FD, Dong RQ. 2015. Polyphenol-rich extract of *Salvia chinensis* exhibits anticancer activity in different cancer cell lines, and induces cell cycle arrest at the G<sub>0</sub>/G<sub>1</sub>-phase, apoptosis and loss of mitochondrial membrane potential in pancreatic cancer cells. **Mol Med Rep** 12: 4843 - 4850.  
<https://doi.org/10.3892%2Fmmr.2015.4074>
- Zhao X, Feng X, Wang C, Peng D, Zhu K, Song JL. 2017. Anticancer activity of *Nelumbo nucifera* stamen extract in human colon cancer HCT-116 cells *in vitro*. **Oncol Lett** 13: 1470 - 1478.  
<https://doi.org/10.3892%2Fol.2016.5547>
- Zheng MS, Liu YS, Yuan T, Liu LY, Li ZY, Huang XL. 2020. Research progress on chemical constituents of *Citrullus colocynthis* and their pharmacological effects. **Zhongguo Zhong Yao Za Zhi** 45: 816 - 824.  
<https://doi.org/10.19540/j.cnki.cjcm.20191104.201>
- Zi CT, Yang L, Xu FQ, Dong FW, Yang D, Li Y, Ding ZT, Zhou J, Jiang ZH, Hu JM. 2018. Synthesis and anticancer activity of dimeric podophyllotoxin derivatives. **Drug Des Devel Ther** 12: 3393 - 3406.  
<https://doi.org/10.2147%2FDDDT.S167382>
- Zips D, Thames HD, Baumann M. 2005. New anticancer agents: *in vitro* and *in vivo* evaluation. **In vivo** 19: 1 - 7.